

# Type TD1

WEH® Swivel joint

for axial alignment of the WEH® Connector



## General

## DESCRIPTION


**Features**

- For free rotation of the WEH® Connector / filling hose in each position
- No twisting of the filling hose
- Version for inert gases and oxygen
- High-quality materials

The WEH® TD1 Swivel joint is the ideal addition for any application where a WEH® Connector can be placed in the optimum connection position without pressure. This prevents the filling hose from twisting.

The swivel joint is simply screwed onto the corresponding WEH® Connector.

The WEH® TD1 is equipped with a seal adapted to the medium. Other sealing materials are available on request. It is the customer's responsibility to clarify the media compatibility.

**Application**

Swivel joint for axial alignment of the WEH® Connector.

## TECHNICAL DATA

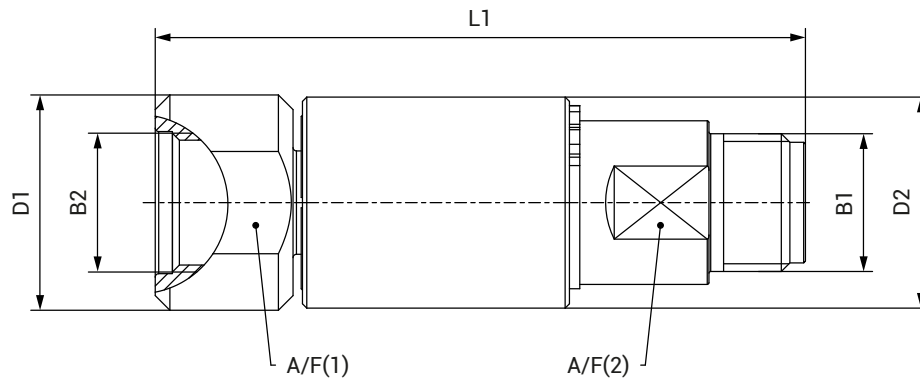
Characteristics	Basic version
Nominal bore (DN)	5 mm
Max. allowable operating pressure PS	420 bar
Temperature range	+5 °C up to +80 °C +5 °C up to +60 °C (O <sub>2</sub> )
Medium	Inert gases and oxygen
Material	Brass
Sealing material	Depending on medium
Conformity / Tests / Approvals	Type approval for suitability against adiabatic compression available

Other designs on request

**Example of use:**


**Ordering / Accessories / Spare parts**
**ORDERING | WEH® TD1 Swivel joint**

approx. dimensions (mm)



Part no.	Description	B1 (male thread)	B2 (female thread)	L1	D1	D2	A/F(1)	A/F(2)
<b>C1-48977-X01</b>	TD1	M16x1.5	M16x1.5	75.5	25	24.5	22	17

Other connector sizes and versions on request.

Required information for ordering see page 7, catalog no. 80.

**ACCESSORIES**

The following accessories are available for the WEH® TD1 Swivel joint:

**Adaptors**

Adaptors for connecting the TD1 swivel joint (port B1) to the filling hose are available on request.

**SPARE PARTS**

Various parts are available as spares for the WEH® TD1 Swivel joint.

Part no.	Description
<b>E50-139S614</b>	Seal

## Technical explanations

### TECHNICAL EXPLANATIONS

#### Abbreviations/Definitions

For explanation of abbreviations and definitions of terms see Technical Appendix of the corresponding catalog or [www.weh.com](http://www.weh.com)

#### Illustrations

The illustrations and/or images used in these data sheet are particularly provided for illustrative purposes only and may differ in some details from the actual product. For binding information, please refer to your individual orders.

#### Safe product selection

Our WEH® Products are designed to be operated by qualified professional users (insofar as WEH® Products are also designed to be operated by other users in individual cases, this is explicitly stated in the corresponding operating instructions). Please note that WEH does not know your system and therefore - also due to the large number of different potential applications of WEH® Products - cannot perform tests on all potential types of application. You alone are responsible for the selection, configuration and suitability of WEH® Products, especially according to the requirements of your system. Before purchasing WEH® Products, please particularly ensure that our products are compatible with your intended use, your performance data, your material and fluids, your system concept and your system limits according to our product specifications. Please also consider your technical and legal requirements for operation, handling and maintenance. The quality and safety of WEH® Products is our highest priority. For this reason, WEH® Products may not be used outside the specifications in the relevant data sheets and product descriptions. If you are not sure whether the WEH® Product is suitable for your system and intended use, please contact us in advance. We also strongly recommend that you refrain from using third-party spare parts or a combination of WEH® Products with unsuitable third-party products. You alone are responsible for reviewing the suitability of third-party products. WEH® Products and WEH® Spare parts comply with our quality and safety standards.

#### Service life

WEH® Products are generally products which may be subject to wear and fatigue during operation and depending on your individual application/ use. For details - in particular regarding the corresponding minimum inspection and maintenance intervals – please refer to the respective operating instructions for the WEH® Product.

#### Explanation on the Pressure Equipment Directive

These WEH® Products are generally classified as pressure accessories in accordance with Article 2 (5) of the Pressure Equipment Directive 2014/68/EU and are considered to be similar to piping. These WEH® Products may not be used as safety accessories. Furthermore, it is pointed out, that these WEH® Products are designed and placed on the market in accordance with the requirements of Article 4 (3) of the Pressure Equipment Directive 2014/68/EU. The assessment with regard to a different classification can, however, be made on request.

#### External change management

WEH reserves the right to update, optimise and adjust its products continuously. This may result in corresponding changes of the product. Customers will be informed proactively or unsolicited by WEH only in individual cases about product updates, product optimisations and/or product adaptations that have been carried out. You are free to contact WEH at any time to request information about any product updates, product optimisations and/or product adjustments.

© All rights reserved, WEH GmbH. Any unauthorized use is strictly forbidden. Subject to alteration.  
No liability will be assumed for any content. Herewith previous versions are no longer valid.

## » Contact

More questions? – Great! Don't hesitate to contact our experts.

Manufacturer:

**WEH GmbH Precision Connectors**

Josef-Henle-Str. 1

89257 Illertissen / Germany

Phone: +49 7303 9609-0

E-Mail: [sales@weh.com](mailto:sales@weh.com)

Website: [www.weh.com](http://www.weh.com)