

Type **TK17 H₂ 70 MPa**

WEH[®] H₂ Fueling Nozzle

for light-duty vehicles (cars) at self-service fueling stations



General

DESCRIPTION



Features

- Left or right single-handed operation
- Compatible with WEH® TN1 H₂ 70 MPa receptacle profile
- WEH® EASY-TURN 250° swivel joint
- Easy operation
- Extremely high flow rate ➔ short filling times
- Plastic thermal protection
- Hand grip with magnet
- WEH® Jaw locking mechanism
- High-grade materials
- Coding for pressure range / gas type

The WEH® TK17 H₂ 70 MPa was developed for refueling cars with compressed hydrogen (CGH₂). The fueling nozzle with single-handed operation is just as quick and easy to use as the common petrol nozzle and has a similar look and feel. Simply lift the nozzle from the dispenser mounting and place it onto the vehicle's receptacle. 250° rotation makes for easy engagement with the vehicle's fuel receptacle. Compress the actuation lever until locking lever engages and the fueling procedure begins. The gaseous hydrogen can only flow through the line if there is a safe connection. After refueling disengage the nozzle's locking lever and disconnect. Please note that refueling may be stopped or paused at any time. The hand grip has a magnet for actuation of the magnet switch for activation of the dispenser. The WEH® TK17 H₂ 70 MPa has a coding specifically for pressure range and gas type and thus the coding will not allow connection to natural gas vehicles or other pressure ranges.

Safety

WEH® TK17 H₂ 70 MPa offers optimum safety to the operator.

The fueling nozzle remains connected to the receptacle until the system is depressurized.

Application

Fueling nozzle for H₂ fast filling of light-duty vehicles (cars) at self-service fueling stations.

		NOZZLE - pressure range/coding			
		3,600 psi	5,000 psi	5,000 psi HF*	10,000 psi
RECEPTACLE - pressure range/coding	3,600 psi	✓			
	5,000 psi	✓	✓		
	5,000 psi HF*	✓	✓	✓	
	10,000 psi	✓	✓		✓

* HF = High-Flow

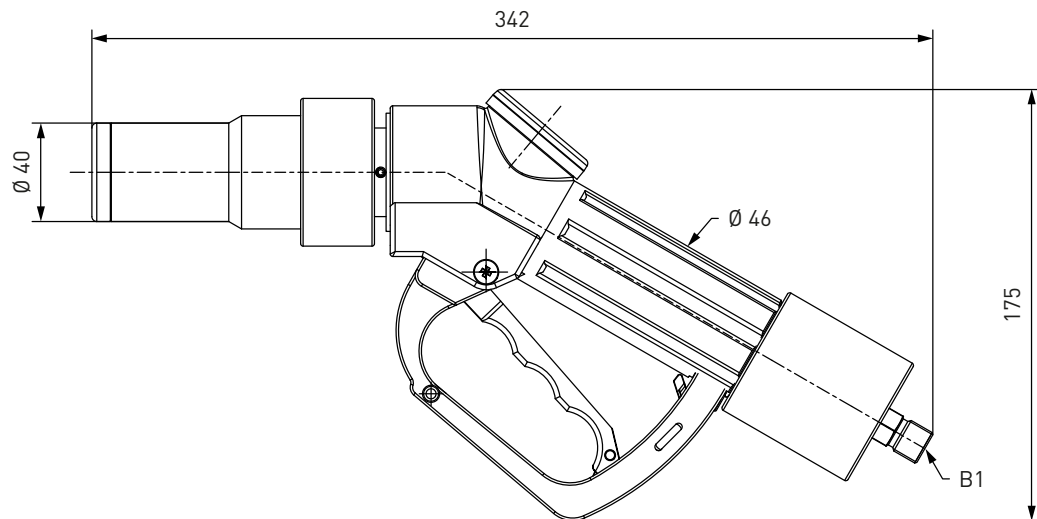
TECHNICAL DATA

Characteristic	Basic version	Options
Nominal bore DN	3 mm	On request
Pressure range	PN = 700 bar (10,000 psi) PS = 875 bar PT = 1255 bar	
Temperature range	-40 °F up to +185 °F	On request
Material	Corrosion resistant	On request
Sealing material	Hydrogen compatible	On request
Design	With plastic thermal protection and hand grip with magnet. Without gas recirculation	On request
Weight	Approx. 3.86 lbs.	
Registration	SAE J2600:2002 SAE TIR J2799	

Ordering / Accessories

ORDERING | WEH® TK17 H₂ 70 MPa Fueling Nozzle

approx. dimensions (mm)



Part No.	Description	Pressure (PN)	Inlet B1 (male thread)
C1-94441-X01	TK17 H ₂ 70 MPa	700 bar / 10,000 psi	UNF 9/16"-18*

* 60° inner cone

Complete nozzle-hose-assemblies consisting of fueling nozzle, hose set and breakaway coupling are available on request.

ACCESSORIES

The following accessories are available for the WEH® TK17 H₂ 70 MPa Fueling Nozzle:

High pressure filling hoses

High pressure filling hose for connecting fueling nozzle and TSA1 H₂ 70 MPa breakaway coupling.
Design: max. operating pressure PS: 875 bar (12,690 psi) / nominal bore DN: 4.5 mm



Part No.	Filling hose B1/B2 (female thread)	Hose length
E68-108609	UNF 9/16"-18*	3 m
E68-108610	UNF 9/16"-18*	4 m
E68-108611	UNF 9/16"-18*	5 m

* DKJ 58°

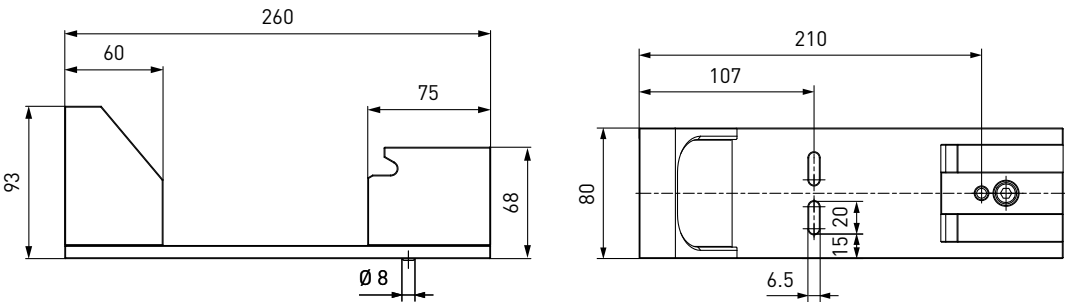
Accessories

Dispenser mounting

Mounting for safe attachment of the fueling nozzle to the dispenser. Design: Aluminium, stainless steel

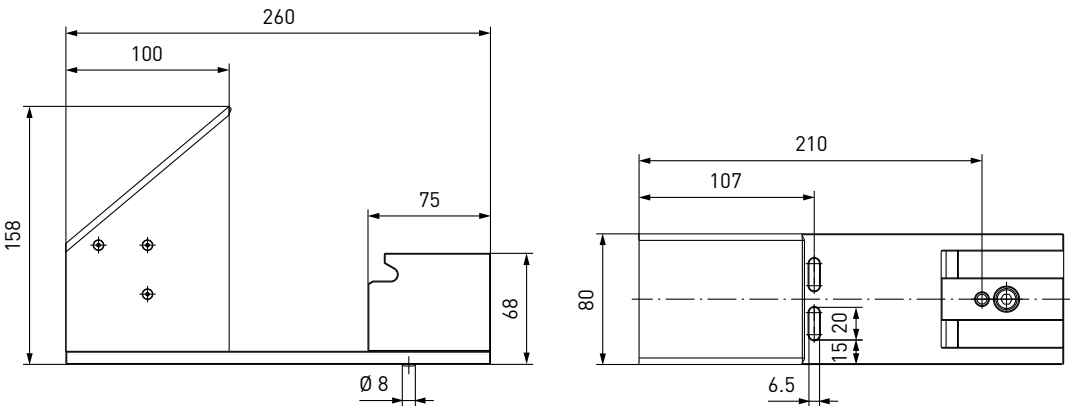
Switch actuated mounting

approx. dimensions (mm)



Switch actuated mounting with weather protection

approx. dimensions (mm)



Part No.	Description
C1-79830	Mounting (switch actuated)
C1-91281	Mounting (switch actuated) with weather protection

Accessories

Spare parts

Various parts are available as spares for the TK17 H₂ 70 MPa fueling nozzle.



Part No.	Description
E80-80187	1 Impact protection
E80-84030	2 Locking lever
E69-67826	3 Logo cap
E80-101120	4 Plastic thermal protection
E99-44923	Maintenance spray

When ordering please quote the part no. imprinted on the fueling nozzle.

Other products

OTHER PRODUCTS

You will find more products in our current catalog no. 50



Further information on our homepage
www.weh.com

Abbreviations/Definition

Explanation of abbreviations see technical appendix in the catalogue or www.weh.com

Safe product selection

Our WEH® Products are designed to be operated by qualified professional users (insofar as WEH® Products are also designed to be operated by other users in individual cases, this is explicitly stated in the corresponding operating instructions). You alone are responsible for the selection of WEH® Products and their configuration according to the requirements of your system. In doing so, please particularly consider your intended use, your performance data, your material compatibility, your system concept and your system limits as well as your technical and legal requirements for operation, handling and maintenance. The quality and safety of WEH® Products is our highest priority. For this reason, WEH® Products may not be used outside the specifications in the relevant data sheets and product descriptions. We also strongly recommend that you refrain from using third-party spare parts or a combination of WEH® Products with unsuitable third-party products. You alone are responsible for reviewing the suitability of third-party products. WEH® Products and WEH® Spare parts comply with our quality and safety standards.

Explanation on the Pressure Equipment Directive

These WEH® Products are generally and exclusively classified as pressure accessories for piping in accordance with Article 2 (5) of the Pressure Equipment Directive 2014/68/EU. These WEH® Products may not be used (i) as safety accessories or (ii) for vessels as defined by the Pressure Equipment Directive 2014/68/EU. Therefore, the application of these WEH® Products must comply with their classification as pressure accessories for piping. The assessment with regard to a different classification can, however, be made on request.

External change management

WEH reserves the right to update, optimise and adjust its products continuously. This may result in corresponding changes of the product. Customers will be informed proactively or unsolicited by WEH only in individual cases about product updates, product optimisations and/or product adaptations that have been carried out. You are free to contact WEH at any time to request information about any product updates, product optimisations and/or product adjustments.

© All rights reserved, WEH GmbH. Any unauthorized use is strictly forbidden. Subject to alteration.
 No liability will be assumed for any content. Herewith previous versions are no longer valid.

» Contacting

For queries and further information, please do not hesitate to contact us.

Manufacturer:

WEH GmbH Gas Technology

Josef-Henle-Str. 1
 89257 Illertissen / Germany

Phone: +49 7303 95190-0
 Fax: +49 7303 95190-9999

Email: h2sales@weh.com
www.weh.com



Distributor US:

WEH Technologies Inc.

24903 Laguna Edge Drive
 Katy, TX 77494 / USA

Phone: +1 832 331 0021
 Fax: +1 281 712 2664

Email: sales@weh.us
www.weh.us