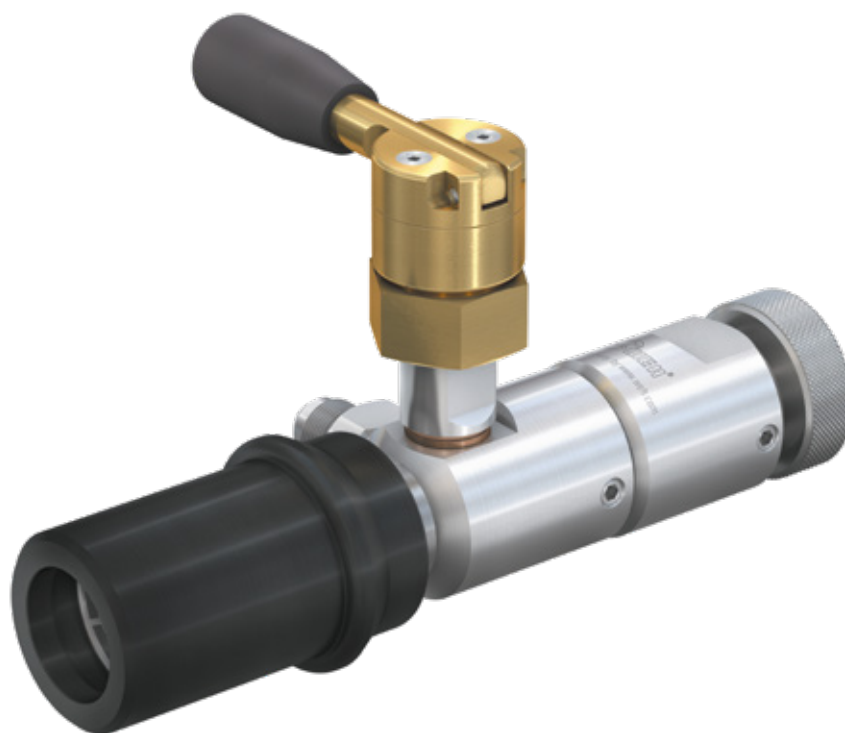


Type **TK6 H₂**

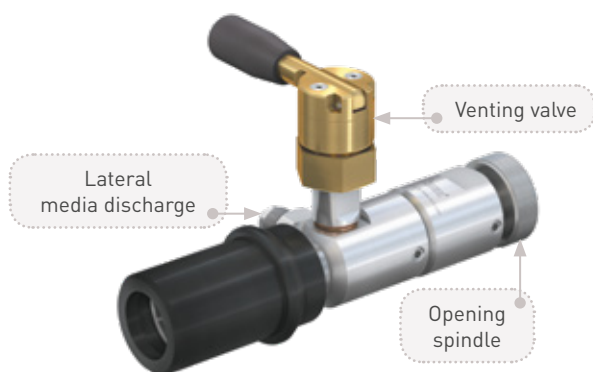
WEH[®] Defueling nozzle

for discharging of hydrogen fuel tanks of cars through the filling receptacle



General

DESCRIPTION



Features

- Discharge through the filling receptacle
- Knurled spindle actuation
- No additional locking device required
- Version with and without venting valve
- Plastic thermal protection
- Only suitable for WEH® TN1 H₂ Receptacles without filter

Cars running on hydrogen have to be serviced and checked regularly, a process involving the discharge of their pressurized fuel tanks. The WEH® TK6 H₂ Defueling nozzle has been designed for this specific purpose.

The defueling nozzle is simply engaged onto the WEH® TN1 H₂ Receptacle of the car and the knurled spindle fully turned until the receptacle is fully open. Discharge can now take place through the lateral media discharge vent.

Application

Defueling nozzle for discharging of hydrogen fuel tanks of cars through the filling receptacle. Only to be used with WEH® TN1 H₂ Receptacles without filter. Operation only by specially trained personnel. Not for self-service operation!

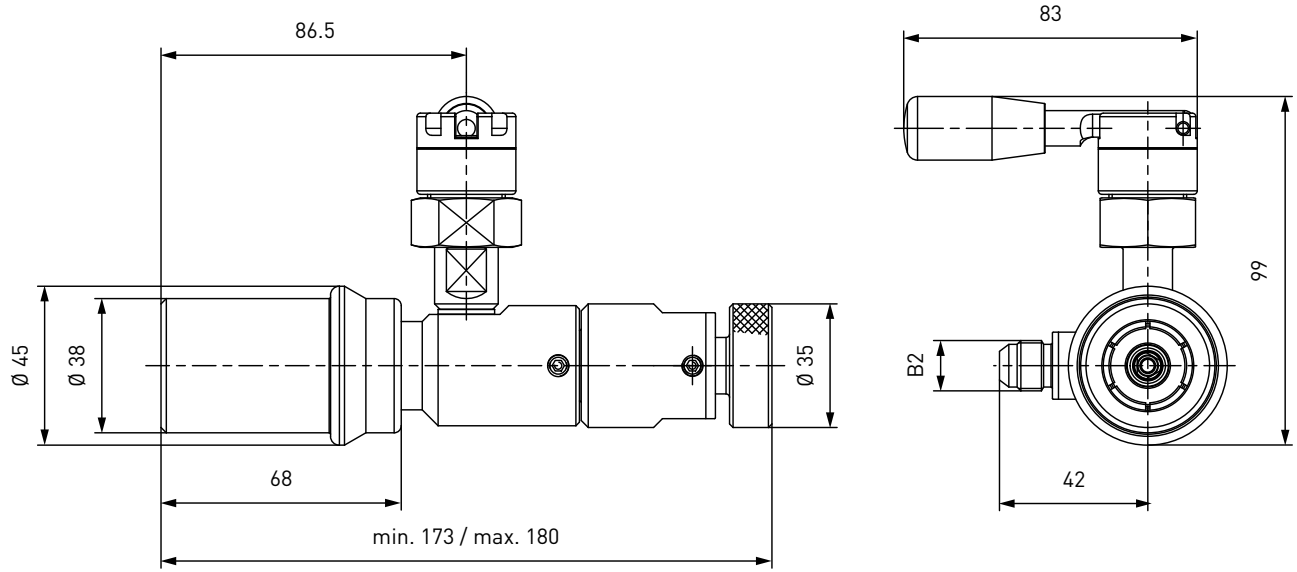
TECHNICAL DATA

Characteristics	Basic version	Options
Nominal bore (DN)	6 mm	On request
Pressure range	PN = 35 MPa (5,000 psi) PS = 45 MPa	
Temperature range	-40 °C up to +85 °C (-40 °F up to +185 °F)	On request
Material	Corrosion resistant	On request
Sealing material	Hydrogen resistant	On request
Design	With plastic thermal protection, opening spindle and with resp. without venting valve	On request
Weight	Approx. 1.2 kg (2.65 lbs.) with venting valve resp. approx. 1 kg (2.21 lbs.) without venting valve	

Ordering

ORDERING | WEH® TK6 H₂ Defueling nozzle with venting valve

approx. dimensions (mm)

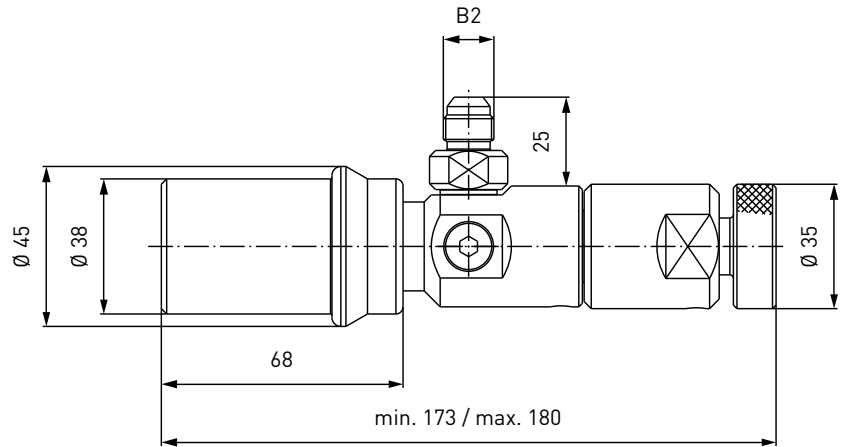


Part No.	Description	Pressure (PN)	B2 (male thread)
C1-104732-X01	TK6 H ₂	35 MPa / 5,000 psi	UNF 9/16"-18*

* acc. to SAE J514, 37°

ORDERING | WEH® TK6 H₂ Defueling nozzle without venting valve

approx. dimensions (mm)



Part No.	Description	Pressure (PN)	B2 (male thread)
C1-114907-X01	TK6 H ₂	35 MPa / 5,000 psi	UNF 9/16"-18*

* acc. to SAE J514, 37°

Accessories

ACCESSORIES

The following accessories are available for the WEH® TK6 H₂ Defueling nozzle:

Hoses

Hoses for connection to the TK6 H₂ defueling nozzle, complete with fittings and press-fittings supported by coil spring stubs.



Part No.	B1/B2 (female thread)	Hose length
E68-60809	UNF 9/16"-18*	3 m
E68-60812	UNF 9/16"-18*	4 m
E68-60813	UNF 9/16"-18*	5 m

* acc. to SAE J514, 37°

Technical explanations

TECHNICAL EXPLANATIONS

Abbreviations/Definitions

For explanation of abbreviations and definitions of terms see Technical Appendix of the corresponding catalog or www.weh.com

Illustrations

The illustrations and/or images used in these data sheet are particularly provided for illustrative purposes only and may differ in some details from the actual product. For binding information, please refer to your individual orders.

Safe product selection

Our WEH® Products are designed to be operated by qualified professional users (insofar as WEH® Products are also designed to be operated by other users in individual cases, this is explicitly stated in the corresponding operating instructions). Please note that WEH does not know your system and therefore - also due to the large number of different potential applications of WEH® Products - cannot perform tests on all potential types of application. You alone are responsible for the selection, configuration and suitability of WEH® Products, especially according to the requirements of your system. Before purchasing WEH® Products, please particularly ensure that our products are compatible with your intended use, your performance data, your material and fluids, your system concept and your system limits according to our product specifications. Please also consider your technical and legal requirements for operation, handling and maintenance. The quality and safety of WEH® Products is our highest priority. For this reason, WEH® Products may not be used outside the specifications in the relevant data sheets and product descriptions. If you are not sure whether the WEH® Product is suitable for your system and intended use, please contact us in advance. We also strongly recommend that you refrain from using third-party spare parts or a combination of WEH® Products with unsuitable third-party products. You alone are responsible for reviewing the suitability of third-party products. WEH® Products and WEH® Spare parts comply with our quality and safety standards.

Service life

WEH® Products are generally products which may be subject to wear and fatigue during operation and depending on your individual application/use. For details - in particular regarding the corresponding minimum inspection and maintenance intervals - please refer to the respective operating instructions for the WEH® Product.

Explanation on the Pressure Equipment Directive

These WEH® Products are generally classified as pressure accessories in accordance with Article 2 (5) of the Pressure Equipment Directive 2014/68/EU and are considered to be similar to piping. These WEH® Products may not be used as safety accessories. Furthermore, it is pointed out, that these WEH® Products are designed and placed on the market in accordance with the requirements of Article 4 (3) of the Pressure Equipment Directive 2014/68/EU. The assessment with regard to a different classification can, however, be made on request.

External change management

WEH reserves the right to update, optimise and adjust its products continuously. This may result in corresponding changes of the product. Customers will be informed proactively or unsolicited by WEH only in individual cases about product updates, product optimisations and/or product adaptations that have been carried out. You are free to contact WEH at any time to request information about any product updates, product optimisations and/or product adjustments.

© All rights reserved, WEH GmbH. Any unauthorized use is strictly forbidden. Subject to alteration.

No liability will be assumed for any content. Herewith previous versions are no longer valid.

» Contact

More questions? – Great! Don't hesitate to contact our experts.

Manufacturer:

WEH GmbH Gas Technology

Josef-Henle-Str. 1

89257 Illertissen / Germany

Phone: +49 7303 95190-0

E-Mail: h2sales@weh.com

Website: www.weh.com