

Type **TSF4 H₂** **WEH[®] Filter**

for installation onboard H₂ vehicles and in fueling stations



General

DESCRIPTION



Features

- For hydrogen free of impurities
- Filter insert can be cleaned
- For installation onboard H₂ vehicles and in fueling stations

Contaminants in the gas flow can enter the vehicle's storage tank during refueling. These dirt particles in the hydrogen fuel may cause damage to the sealing components. WEH, therefore, offers the WEH® TSF4 H₂ Filter Series for clean hydrogen. Solid particles are captured reliably.

The filter element can be removed and is re-usable after having been cleaned.

The filter is mainly used for onboard H₂ powered vehicles, but can also be used for fueling stations and dispensers.

The WEH® TSF4 H₂ is available as round filter and as T-filter. The round filter is available with tube fitting or female thread on both sides or male and female thread. The T-filter has been specially designed for use in H₂ buses and trucks.

The filter can be removed for cleaning purposes without tedious unscrewing of the media lines.



TSF4 H₂ T-Filter

Application

Filter for installation onboard H₂ vehicles (e1 approval) and in fueling stations.

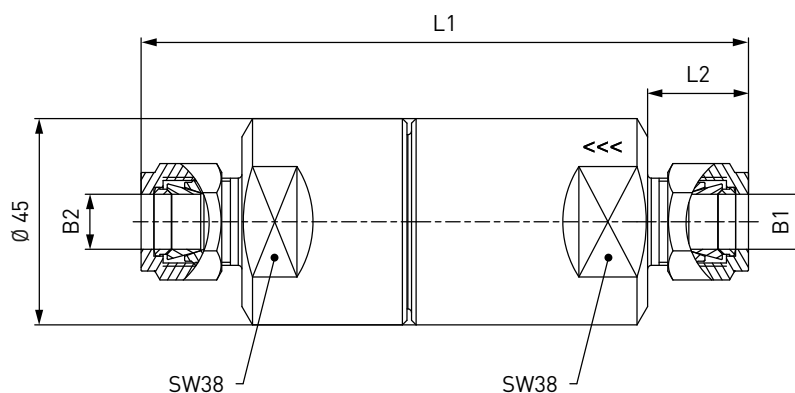
TECHNICAL DATA

Characteristic	Basic version	Options
Nominal bore DN	Depending on design	On request
Pressure range	PN = 350 bar (5,000 psi) PS = 450 bar PT = 675 bar	
Temperature range	-40 °F up to +185 °F	On request
Material	Corrosion resistant stainless steel	On request
Sealing material	Hydrogen compatible	On request
Filter element	40 resp. 10 micron	On request
Design	Incl. fittings (only for filters with tube fitting)	On request
Registration	e1 approval on request	

Ordering

ORDERING | WEH® TSF4 H₂ Round Filter with tube fitting on both sides

approx. dimensions (mm)



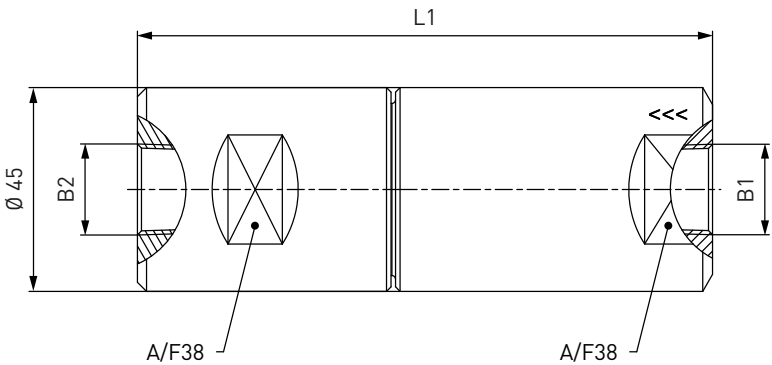
Part No.	Description	Filter (micron)	DN	Pressure (PN)	Inlet B1	Outlet B2	L1	L2
C1-33157-X01	TSF4 H ₂	10	8	350 bar / 5,000 psi	Tube Ø 3/8"*	Tube Ø 3/8"*	128	20
C1-69045-X01	TSF4 H ₂	10	8	350 bar / 5,000 psi	Tube Ø 10*	Tube Ø 10*	128	20
C1-36032-X01	TSF4 H ₂	40	8	350 bar / 5,000 psi	Tube Ø 10*	Tube Ø 10*	129	20
C1-30214-X01	TSF4 H ₂	40	10	350 bar / 5,000 psi	Tube Ø 12*	Tube Ø 12*	133	22
C1-59447-X01	TSF4 H ₂	10	10	350 bar / 5,000 psi	Tube Ø 1/2"*	Tube Ø 1/2"*	133	22
C1-49130-X01	TSF4 H ₂	40	9	350 bar / 5,000 psi	Tube Ø 1/2"*	Tube Ø 1/2"*	133	22
C1-30213-X1-X01	TSF4 H ₂	40	12	350 bar / 5,000 psi	Tube Ø 16"*	Tube Ø 16"*	134	23

* double ferrule fitting

Ordering

ORDERING | WEH® TSF4 H₂ Round Filter with female thread on both sides

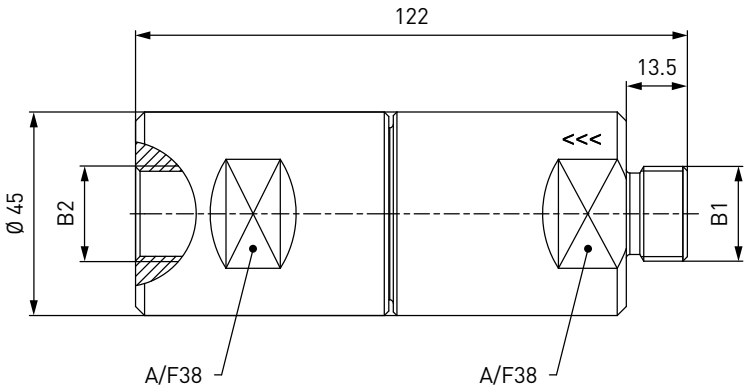
approx. dimensions (mm)



Part No.	Description	Filter (micron)	DN	Pressure (PN)	Inlet B1 (female thread)	Outlet B2 (female thread)	L1
C1-104265-X01	TSF4 H ₂	40	10	350 bar / 5,000 psi	NPT 3/8"	NPT 3/8"	122
C1-104263-X01	TSF4 H ₂	40	12	350 bar / 5,000 psi	NPT 1/2"	NPT 1/2"	127

ORDERING | WEH® TSF4 H₂ Round Filter with male and female thread

approx. dimensions (mm)

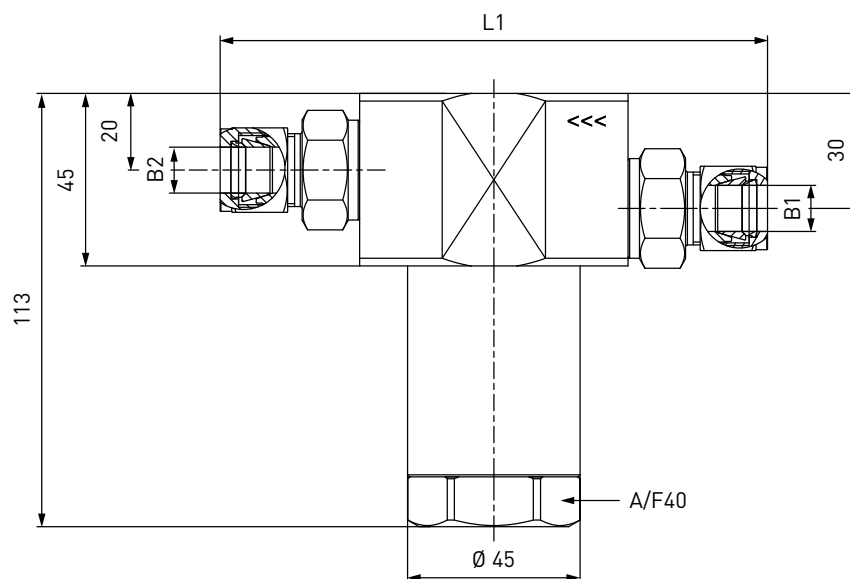


Part No.	Description	Filter (micron)	DN	Pressure (PN)	Inlet B1 (male thread)	Outlet B2 (female thread)
C1-36114-X01	TSF4 H ₂	40	12	350 bar / 5,000 psi	G1/2"	G1/2"

Ordering / Spare parts

ORDERING | WEH® TSF4 H₂ T-Filter with tube fitting on both sides

approx. dimensions (mm)



Part No.	Description	Filter (micron)	DN	Pressure (PN)	Inlet B1	Outlet B2	L1
C1-117286-X01	TSF4 H ₂	40	6	350 bar / 5,000 psi	Tube Ø 8*	Tube Ø 8*	140
C1-70379-X01	TSF4 H ₂	10	8	350 bar / 5,000 psi	Tube Ø 3/8"*	Tube Ø 3/8"*	140
C1-58026-X01	TSF4 H ₂	10	10	350 bar / 5,000 psi	Tube Ø 12*	Tube Ø 12*	145
C1-73987-X01	TSF4 H ₂	10	10	350 bar / 5,000 psi	Tube Ø 1/2"*	Tube Ø 1/2"*	145
C1-47886-X01	TSF4 H ₂	40	12	350 bar / 5,000 psi	Tube Ø 16*	Tube Ø 16*	145
C1-69040-X01	TSF4 H ₂	10	12	350 bar / 5,000 psi	Tube Ø 16*	Tube Ø 16*	145

* double ferrule fitting

SPARE PARTS

Various parts are available as spares for the WEH® TSF4 H₂ Filter:

Part No.	Description
E69-9062	Wire filter insert 40 micron
E69-9063	Wire filter insert 10 micron
E51-47589	O-ring for filter insert (only T-filter)

Other products

OTHER PRODUCTS

You will find more products in our current catalog no. 50



Further information on our homepage
www.weh.com

Abbreviations/Definition

Explanation of abbreviations see technical appendix in the catalogue or www.weh.com

Safe product selection

Our WEH® Products are designed to be operated by qualified professional users (insofar as WEH® Products are also designed to be operated by other users in individual cases, this is explicitly stated in the corresponding operating instructions). You alone are responsible for the selection of WEH® Products and their configuration according to the requirements of your system. In doing so, please particularly consider your intended use, your performance data, your material compatibility, your system concept and your system limits as well as your technical and legal requirements for operation, handling and maintenance. The quality and safety of WEH® Products is our highest priority. For this reason, WEH® Products may not be used outside the specifications in the relevant data sheets and product descriptions. We also strongly recommend that you refrain from using third-party spare parts or a combination of WEH® Products with unsuitable third-party products. You alone are responsible for reviewing the suitability of third-party products. WEH® Products and WEH® Spare parts comply with our quality and safety standards.

Explanation on the Pressure Equipment Directive

These WEH® Products are generally and exclusively classified as pressure accessories for piping in accordance with Article 2 (5) of the Pressure Equipment Directive 2014/68/EU. These WEH® Products may not be used (i) as safety accessories or (ii) for vessels as defined by the Pressure Equipment Directive 2014/68/EU. Therefore, the application of these WEH® Products must comply with their classification as pressure accessories for piping. The assessment with regard to a different classification can, however, be made on request.

External change management

WEH reserves the right to update, optimise and adjust its products continuously. This may result in corresponding changes of the product. Customers will be informed proactively or unsolicited by WEH only in individual cases about product updates, product optimisations and/or product adaptations that have been carried out. You are free to contact WEH at any time to request information about any product updates, product optimisations and/or product adjustments.

© All rights reserved, WEH GmbH. Any unauthorized use is strictly forbidden. Subject to alteration.
No liability will be assumed for any content. Herewith previous versions are no longer valid.

» Contacting

For queries and further information, please do not hesitate to contact us.

Manufacturer:

WEH GmbH Gas Technology

Josef-Henle-Str. 1
89257 Illertissen / Germany

Phone: +49 7303 95190-0
Fax: +49 7303 95190-9999

Email: h2sales@weh.com
www.weh.com



Distributor US:

WEH Technologies Inc.

24903 Laguna Edge Drive
Katy, TX 77494 / USA

Phone: +1 832 331 0021
Fax: +1 281 712 2664

Email: sales@weh.us
www.weh.us