

Type **TW03**

WEH[®] Connector for pressure and vacuum testing
of components with internal thread



General

DESCRIPTION



Features

- Pressure-tight connections by hand-tightening
- Simple seal replacement
- Ergonomic design
- High-grade materials

The WEH® TW03 Quick connector is especially designed for testing components with internal threads. Only hand-tighten the connector into the thread until the o-ring seal contacts the test piece. The TW03 seals without wrenches, sealants or tape. NBR seals meet most industrial requirements. In addition to our standard version, we also offer customer-tailored solutions, as for example TW03 with swivel joint, for sealing on round surfaces or for higher pressure ranges up to 700 bar. Please contact us!

Application

Quick connector for pressure and vacuum testing of components with internal thread, e.g. fittings, fixtures, tubes, boilers, tanks, radiators, etc.

TECHNICAL DATA

Characteristics	Basic version
Max. allowable operating pressure PS	Vacuum up to 345 bar
Temperature range	+5 °C up to +80 °C
Leak rate	1×10^{-3} mbar x l/s
Material	Corrosion resistant stainless steel
Sealing material	Front seal of NBR

Other designs on request

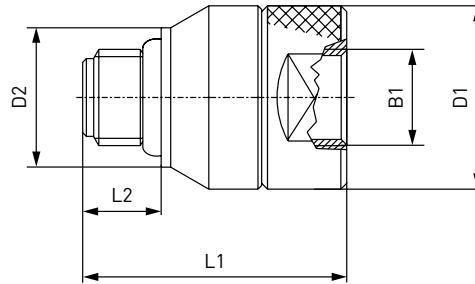
Example of use:



Ordering

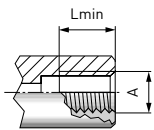
ORDERING | WEH® TW03 Quick connector

approx. dimensions (mm)



Body size	B1 (internal thread)	D1	D2	L1	L2
1	G1/8"	20.5	15.0	33.0	10.5
2	G1/4"	25.0	19.0	36.0	11.0
3	G3/8"	30.0	22.0	39.5	11.0
4	G1/2"	35.0	28.0	47.5	14.5
5	G3/4"	43.0	38.0	50.5	16.0
6	G1"	50.0	44.0	60.0	18.0

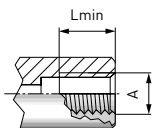
Whitworth tube thread to DIN EN ISO 228-1 - acc. to DIN 3852 part 2, form X and Y



Part no.	Body size	Thread A (internal thread)	Max. operating pressure PS	Lmin*
C1-11821	1	G1/8"	345 bar	7.0
C1-11824	2	G1/4"	345 bar	9.5
C1-11827	3	G3/8"	276 bar	10.5
C1-11830	4	G1/2"	276 bar	10.5
C1-11833	5	G3/4"	276 bar	11.0
C1-11836	6	G1"	276 bar	12.5

* Lmin: minimum thread length
Other connector sizes on request

NPT thread (ANSI/ASME B1.20.1-1983) - acc. to SAE J476a



Part no.	Body size	Thread A (internal thread)	Max. operating pressure PS	Lmin*
C1-12224	1	NPT 1/8"	345 bar	7.0
C1-12233	2	NPT 1/4"	345 bar	9.5
C1-12235	3	NPT 3/8"	276 bar	10.5
C1-12239	4	NPT 1/2"	276 bar	10.5
C1-12240	5	NPT 3/4"	276 bar	11.0
C1-12242	6	NPT 1"	276 bar	12.5

* Lmin: minimum thread length
Other connector sizes on request

Other connector versions on request.

Required information for ordering see page 7, catalogue no. 35.

Accessories

ACCESSORIES

The following accessories are available for the WEH® TW03:

Screw plug for plug version

If the WEH® Connector is to be used as a plug, the media inlet 'B1' will be sealed with a screw plug of stainless steel (O-ring of NBR 70° Shore) for high pressure range. It is recommended that the media compatibility of the seal be tested by the customer!



Part no.	Description	Connection (external thread)	Pressure range
W9329	Screw plug (high pressure)	G1/8"	50 - 350 bar
W9330	Screw plug (high pressure)	G1/4"	50 - 350 bar
W9331	Screw plug (high pressure)	G3/8"	50 - 350 bar
W9332	Screw plug (high pressure)	G1/2"	50 - 350 bar
W9333	Screw plug (high pressure)	G3/4"	50 - 350 bar
W9334	Screw plug (high pressure)	G1"	50 - 350 bar

SPECIAL SOLUTIONS

Examples:



TW03 with extension



TW03 for round surfaces

Other products**OTHER PRODUCTS**

You will find more products in our current catalogue no. 35



Further information on our homepage
www.weh.com

Abbreviations/Definition

Explanation of abbreviations see technical appendix in the catalogue or www.weh.com

Safe product selection

Our WEH® Products are designed to be operated by qualified professional users (insofar as WEH® Products are also designed to be operated by other users in individual cases, this is explicitly stated in the corresponding operating instructions). You alone are responsible for the selection of WEH® Products and their configuration according to the requirements of your system. In doing so, please particularly consider your intended use, your performance data, your material compatibility, your system concept and your system limits as well as your technical and legal requirements for operation, handling and maintenance. The quality and safety of WEH® Products is our highest priority. For this reason, WEH® Products may not be used outside the specifications in the relevant data sheets and product descriptions. We also strongly recommend that you refrain from using third-party spare parts or a combination of WEH® Products with unsuitable third-party products. You alone are responsible for reviewing the suitability of third-party products. WEH® Products and WEH® Spare parts comply with our quality and safety standards.

Explanation on the Pressure Equipment Directive

These WEH® Products are generally and exclusively classified as pressure accessories for piping in accordance with Article 2 (5) of the Pressure Equipment Directive 2014/68/EU. These WEH® Products may not be used (i) as safety accessories or (ii) for vessels as defined by the Pressure Equipment Directive 2014/68/EU. Therefore, the application of these WEH® Products must comply with their classification as pressure accessories for piping. The assessment with regard to a different classification can, however, be made on request.

External change management

WEH reserves the right to update, optimise and adjust its products continuously. This may result in corresponding changes of the product. Customers will be informed proactively or unsolicited by WEH only in individual cases about product updates, product optimisations and/or product adaptations that have been carried out. You are free to contact WEH at any time to request information about any product updates, product optimisations and/or product adjustments.

© All rights reserved, WEH GmbH. Any unauthorized use is strictly forbidden. Subject to alteration.
No liability will be assumed for any content. Herewith previous versions are no longer valid.

» Contact

For queries and further information, please do not hesitate to contact us.

Manufacturer:

WEH GmbH Precision Connectors

Josef-Henle-Str. 1
89257 Illertissen / Germany

Phone: +49 7303 9609-0

Email: sales@weh.com

www.weh.com