

# Type **TW05**

**WEH<sup>®</sup> Connector for pneumatic pressure and function testing**

of components with female thread



## General

### DESCRIPTION



#### Features

- Connection in seconds
- No hand tightening required
- WEH® Jaw locking mechanism
- Simple seal replacement
- Ergonomic design
- Compact design
- High-grade materials
- Automation possible

With the WEH® TW05 Quick connector pneumatic components are tested faster than ever before. Connecting and pressure impacting of the test piece is accomplished in one operation by simple actuation of the sliding sleeve. In this way, costly testing times are shortened and the quick connector pays for itself in a very short time.

#### Application

Quick connector for pneumatic pressure and function testing of components with female thread, e.g. cylinders, valves, fixtures, pivot drives etc.

**Note:** For using the WEH® Connectors with pneumatic actuation and clamping jaws in an automated system please observe the technical note on page 89 in catalog no. 35.

### TECHNICAL DATA

Characteristics	Basic version
Operating pressure PS	73 - 175 psi compressed air
Temperature range	+41 °F up to +176 °F
Leak rate	$1 \times 10^{-3}$ mbar x l/s
Material	Clamping jaws: Corrosion-resistant stainless steel Outer parts: Anodized aluminium
Sealing material	NBR

Other designs on request

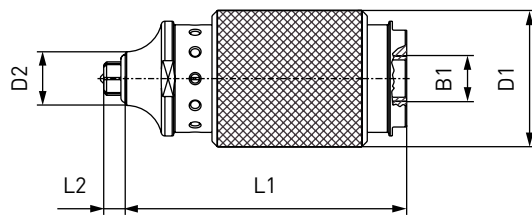
#### Example of use:



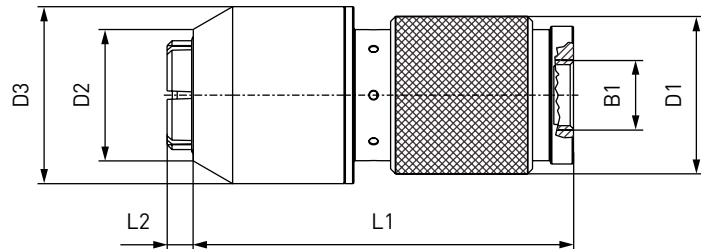
## Ordering

### ORDERING | WEH® TW05 Quick connector

approx. dimensions (mm)



Body size 0 - 4

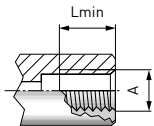


Body size 5 - 6

Body size	Inlet B1* (female thread)	D1	D2	D3	L1	L2
1	1/4" NPT	38.0	15.0	-	78.5	6.0
2	1/4" NPT	38.0	19.0	-	78.5	6.0
3	1/2" NPT	48.0	23.5	-	82.5	6.5
4	1/2" NPT	48.0	27.0	-	83.0	6.0
5	1/2" NPT	48.0	32.0	54.0	115.0	9.0
6	1/2" NPT	48.0	40.0	54.0	116.0	8.0

\* metric threads (G) available on request

### Metric ISO thread to DIN 13 - acc. to DIN 3852 part 1, form X and Y

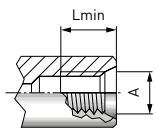


Part No.	Body size	Thread A (female thread)	Lmin*
<b>TW05-W8012-041</b>	1	M8x1.0	7.0
<b>TW05-W8013-041</b>	1	M10x1.0	7.0
<b>TW05-W8042-041</b>	1	M10x1.5	7.0
<b>TW05-W8014-041</b>	2	M12x1.0	9.5
<b>TW05-W8015-041</b>	2	M12x1.5	9.5
<b>TW05-W8041-041</b>	2	M12x1.75	9.5
<b>TW05-W8039-041</b>	2	M14x1.0	9.5
<b>TW05-W8016-041</b>	2	M14x1.5	9.5
<b>TW05-W8017-081</b>	3	M16x1.5	10.5
<b>TW05-W8018-081</b>	3	M18x1.5	10.5
<b>TW05-W8019-081</b>	4	M20x1.5	10.5
<b>TW05-W8020-081</b>	4	M22x1.5	10.5
<b>TW05-W8021-081</b>	5	M24x1.5	11.0
<b>TW05-W8040-081</b>	6	M30x1.5	12.5

\* Lmin: minimum thread length

## Ordering

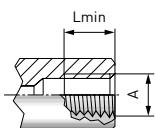
SAE-O-Ring Boss - acc. to SAE J1926 / ISO 11926



Part No.	Body size	Thread A (UNF/UN female thread)	Lmin*
<b>TW05-W8030-041</b>	1	-4 [7/16"-20]	7.0
<b>TW05-W8031-041</b>	2	-5 [1/2"-20]	9.5
<b>TW05-W8032-041</b>	2	-6 [9/16"-18]	9.5
<b>TW05-W8033-081</b>	3	-8 [3/4"-16]	10.5
<b>TW05-W8034-081</b>	4	-10 [7/8"-14]	10.5
<b>TW05-W8035-081</b>	5	-12 [1 1/16"-12]	11.0
<b>TW05-W8036-081</b>	6	-14 [1 3/16"-12]	11.0
<b>TW05-W8037-081</b>	6	-16 [1 5/16"-12]	11.0

\* Lmin: minimum thread length

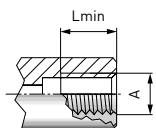
BSPT (tapered Whitworth tube thread) - acc. to DIN 3852 part 2, form X and Y



Part No.	Body size	Thread A (female thread)	Lmin*
<b>TW05-W8043-041</b>	1	1/8" BSPT	7.0
<b>TW05-W8044-041</b>	2	1/4" BSPT	9.5
<b>TW05-W8038-081</b>	3	3/8" BSPT	10.5
<b>TW05-W8045-081</b>	4	1/2" BSPT	10.5
<b>TW05-W8053-081</b>	5	3/4" BSPT	11.0
<b>TW05-W8047-081</b>	6	1" BSPT	12.5

\* Lmin: minimum thread length

NPT thread (ANSI/ASME B1.20.1-1983) - acc. to SAE J476a

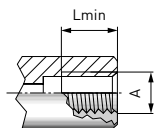


Part No.	Body size	Thread A (female thread)	Lmin*
<b>TW05-W8006-041</b>	1	1/8" NPT	7.0
<b>TW05-W8007-041</b>	2	1/4" NPT	9.5
<b>TW05-W8008-081</b>	3	3/8" NPT	10.5
<b>TW05-W8009-081</b>	4	1/2" NPT	10.5
<b>TW05-W8010-081</b>	5	3/4" NPT	11.0
<b>TW05-W8011-081</b>	6	1" NPT	12.5

\* Lmin: minimum thread length

## Ordering / Accessories

Whitworth tube thread to DIN EN ISO 228-1 - acc. to DIN 3852 part 2, form X and Y



Part No.	Body size	Thread A (female thread)	Lmin*
<b>TW05-W8000-041</b>	1	G1/8"	7.0
<b>TW05-W8001-041</b>	2	G1/4"	9.5
<b>TW05-W8002-081</b>	3	G3/8"	10.5
<b>TW05-W8003-081</b>	4	G1/2"	10.5
<b>TW05-W8004-081</b>	5	G3/4"	11.0
<b>TW05-W8005-081</b>	6	G1"	12.5

\* Lmin: minimum thread length

Other connector sizes and versions on request. Required information for ordering see page 9, catalog no. 35.

When ordering WEH® TW05 please indicate in addition to the details requested on page 9 in catalog no. 35 the following information:

### 1. Media port (Inlet B1)

The termination thread profile is determined in the part no., see example below:

Example: TW05-W8013-041

The following standard thread profiles are available:

041 = 1/4" NPT    045 = G1/4"

081 = 1/2" NPT    085 = G1/2"\*

\*G1/2" is compatible to 1/2" NPT

## ACCESSORIES

The following accessories are available for the WEH® TW05:

### Control housing for automation

A control housing for automatic testing is also available for the TW05 as an alternative to the sliding sleeve.



Part No.	Description
<b>E01-50292</b>	Control housing for automation (body size 1)

## SPECIAL SOLUTIONS

Examples:



TW05 with extension

## Other products

### OTHER PRODUCTS

You will find more products in our current catalog no. 35



Further information on our homepage  
[www.weh.com](http://www.weh.com)

#### Abbreviations/Definition

Explanation of abbreviations see technical appendix in the catalogue or [www.weh.com](http://www.weh.com)

#### Safe product selection

Our WEH® Products are designed to be operated by qualified professional users (insofar as WEH® Products are also designed to be operated by other users in individual cases, this is explicitly stated in the corresponding operating instructions). You alone are responsible for the selection of WEH® Products and their configuration according to the requirements of your system. In doing so, please particularly consider your intended use, your performance data, your material compatibility, your system concept and your system limits as well as your technical and legal requirements for operation, handling and maintenance. The quality and safety of WEH® Products is our highest priority. For this reason, WEH® Products may not be used outside the specifications in the relevant data sheets and product descriptions. We also strongly recommend that you refrain from using third-party spare parts or a combination of WEH® Products with unsuitable third-party products. You alone are responsible for reviewing the suitability of third-party products. WEH® Products and WEH® Spare parts comply with our quality and safety standards.

#### Explanation on the Pressure Equipment Directive

These WEH® Products are generally and exclusively classified as pressure accessories for piping in accordance with Article 2 (5) of the Pressure Equipment Directive 2014/68/EU. These WEH® Products may not be used (i) as safety accessories or (ii) for vessels as defined by the Pressure Equipment Directive 2014/68/EU. Therefore, the application of these WEH® Products must comply with their classification as pressure accessories for piping. The assessment with regard to a different classification can, however, be made on request.

#### External change management

WEH reserves the right to update, optimise and adjust its products continuously. This may result in corresponding changes of the product. Customers will be informed proactively or unsolicited by WEH only in individual cases about product updates, product optimisations and/or product adaptations that have been carried out. You are free to contact WEH at any time to request information about any product updates, product optimisations and/or product adjustments.

© All rights reserved, WEH GmbH. Any unauthorized use is strictly forbidden. Subject to alteration.  
No liability will be assumed for any content. Herewith previous versions are no longer valid.

#### » Contacting

For queries and further information, please do not hesitate to contact us.

Manufacturer:

**WEH GmbH Precision Connectors**

Josef-Henle-Str. 1  
89257 Illertissen / Germany

Phone: +49 7303 9609-0  
Fax: +49 7303 9609-9999

Email: [sales@weh.com](mailto:sales@weh.com)  
[www.weh.com](http://www.weh.com)