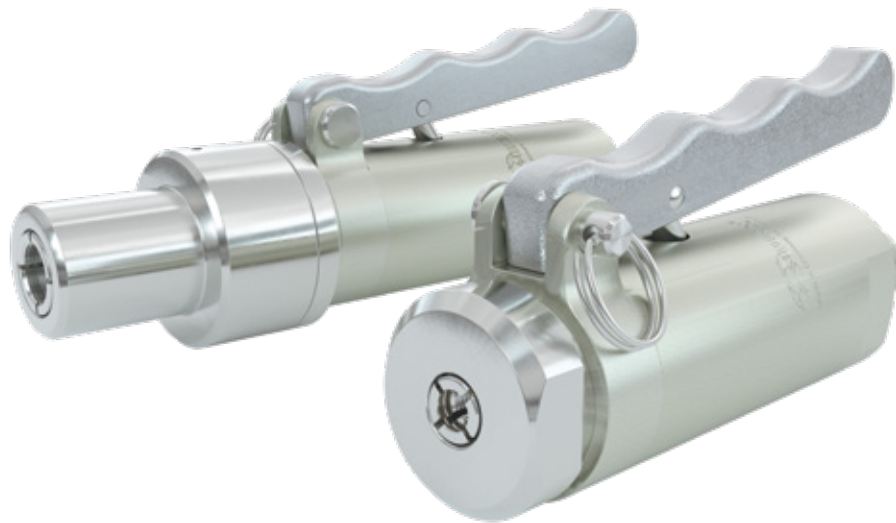


# Type **TW141**

**WEH<sup>®</sup> Connector for pressure and function testing**

of components with straight tube connection (external tube Ø 4.8 mm - 22.2 mm)



## General

### DESCRIPTION



#### Features

- Connection in seconds
- No hand tightening required
- For connection onto straight tubes, sealing on the external diameter
- No lateral forces generated on connection
- WEH® Jaw locking mechanism
- Ergonomic design
- High-grade materials

The WEH® TW141 Quick connector provides pressure-tight connections on straight tubes of copper, steel or aluminium and has earned a reputation for ease of operation. The TW141 is a lever-actuated connector, which creates no lateral forces that can distort the test piece or filling port when connecting and disconnecting. WEH® TW141 is fitted with an internal safety feature which prevents the connector from being removed until a pressure lower than 75 psi is attained.

The WEH® TW141 is equipped with a NBR front seal. Other sealing materials on request. It is the customer's responsibility to clarify the media compatibility.

#### Application

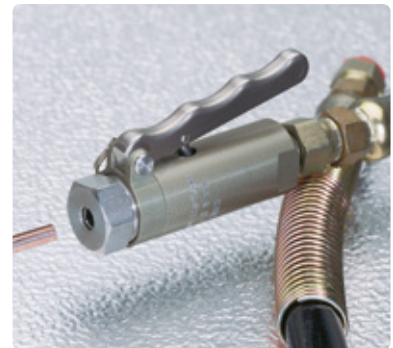
Quick connector for pressure and function testing of components with straight tube connection (sealing on external tube diameter), as for example leak testing of heat exchangers, air conditioning components and tube assemblies. Filling of closed cooling circuits with refrigerants.

### TECHNICAL DATA

Characteristics	Basic version
Operating pressure PS	Vacuum up to max. 1,450 psi
Temperature range	+14 °F up to +176 °F
Leak rate	$1 \times 10^{-3}$ mbar x l/s
Actuation	Manual actuation via hand lever
Surface finish of test piece	Roughness $\leq$ Rz8 $\mu$ m
Material hardness of test piece	Max. hardness 28 HRC
Material	Clamping jaws: Corrosion resistant stainless steel Housing: Anodized aluminium
Sealing material	Front seal of NBR

Other designs on request

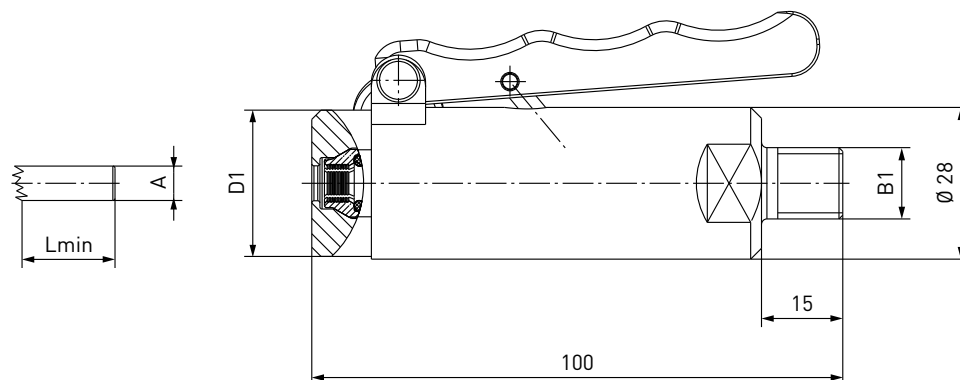
#### Example of use:



## Ordering

### ORDERING | WEH® TW141 Quick connector – Ø A 4.8 mm up to Ø A 8.0 mm

approx. dimensions (mm)



Part No.	Body size	Sealing range external tube Ø A	Tolerance	Inlet B1 (male thread)	D1	Lmin*
<b>C1-17749</b>	1	4.8 (3/16")	± 0.2	1/4" NPT	27	19
<b>C1-18575</b>	1	5.0	± 0.2	1/4" NPT	27	19
<b>C1-14967</b>	1	6.0	± 0.2	1/4" NPT	27	19
<b>C1-17606</b>	1	6.35 (1/4")	± 0.2	1/4" NPT	27	19
<b>C1-17750</b>	1	7.9 (5/16")	± 0.2	1/4" NPT	27	19
<b>C1-14968</b>	1	8.0	± 0.2	1/4" NPT	27	19

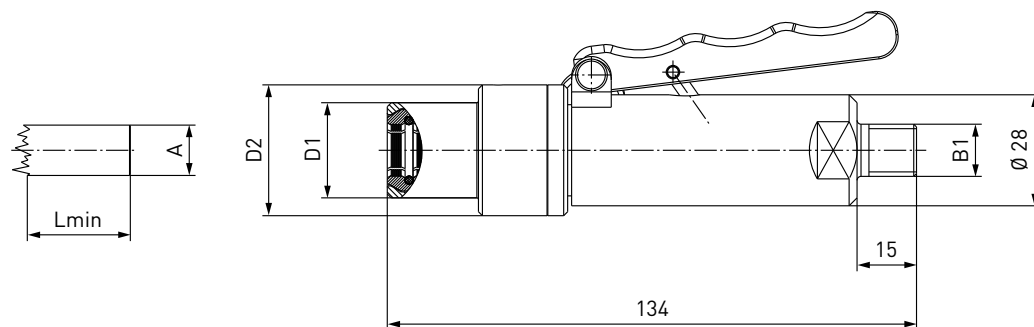
\* Lmin: minimum insertion length of test piece

**Note:** required roundness of external tube diameter max. 0.25 mm

## Ordering

### ORDERING | WEH® TW141 Quick connector – Ø A 9.5 mm up to Ø A 22.2 mm

approx. dimensions [mm]



Part No.	Body size	Sealing range external tube Ø A	Tolerance	Inlet B1 (male thread)	D1	D2	Lmin*
<b>C1-17536</b>	2	9.5 (3/8")	± 0.1	1/4" NPT	21	33	19
<b>C1-16773</b>	2	10.0	± 0.1	1/4" NPT	19	33	15
<b>C1-16774</b>	2	12.0	± 0.1	1/4" NPT	21	33	15
<b>C1-17751</b>	2	12.7 (1/2")	± 0.1	1/4" NPT	24	33	15
<b>C1-16775</b>	2	15.0	± 0.1	1/4" NPT	24	33	15
<b>C1-17959</b>	3	15.9 (5/8")	± 0.1	1/4" NPT	32	49	15
<b>C1-16776</b>	3	16.0	± 0.1	1/4" NPT	32	49	15
<b>C1-16777</b>	3	18.0	± 0.1	1/4" NPT	34	49	15
<b>C1-18006</b>	3	19.05 (3/4")	± 0.1	1/4" NPT	34	49	15
<b>C1-16778</b>	3	22.0	± 0.1	1/4" NPT	38	49	15
<b>C1-17939</b>	3	22.2 (7/8")	± 0.1	1/4" NPT	38	49	15

\* Lmin: minimum insertion length of test piece

**Note:** required roundness of external tube diameter max. 0.25 mm

Other connector sizes and versions on request.

Required information for ordering see page 9, catalog no. 35.

## Accessories

### ACCESSORIES

The following accessories are available for the WEH® TW141:

#### Adaptors / Plugs

Different adaptors for other media inlets are available. If the connector is to be used as a plug, the media inlet 'B1' can be sealed.

Adaptor

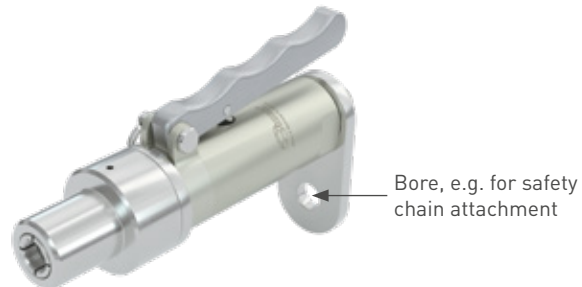


Plug

Part No.	Description	Connection
<b>E29-30810</b>	Adaptor	1/4" NPT female thread - G1/4" female thread
<b>E201-30366</b>	Adaptor	1/4" NPT female thread - G1/4" male thread
<b>E29-934P</b>	Adaptor	1/4" NPT female thread - UNF 7/16" male thread
<b>E29-900P</b>	Plug	1/4" NPT female thread

#### Anchor plate

WEH offers an anchor plate to create a safe, secure attachment for the TW141 and which can be used for all sealing ranges.



Part No.	Description
<b>E29-45285</b>	Anchor plate for TW141

## Other products

### OTHER PRODUCTS

You will find more products in our current catalog no. 35



Further information on our homepage  
[www.weh.com](http://www.weh.com)

#### Abbreviations/Definition

Explanation of abbreviations see technical appendix in the catalogue or [www.weh.com](http://www.weh.com)

#### Safe product selection

Our WEH® Products are designed to be operated by qualified professional users (insofar as WEH® Products are also designed to be operated by other users in individual cases, this is explicitly stated in the corresponding operating instructions). You alone are responsible for the selection of WEH® Products and their configuration according to the requirements of your system. In doing so, please particularly consider your intended use, your performance data, your material compatibility, your system concept and your system limits as well as your technical and legal requirements for operation, handling and maintenance. The quality and safety of WEH® Products is our highest priority. For this reason, WEH® Products may not be used outside the specifications in the relevant data sheets and product descriptions. We also strongly recommend that you refrain from using third-party spare parts or a combination of WEH® Products with unsuitable third-party products. You alone are responsible for reviewing the suitability of third-party products. WEH® Products and WEH® Spare parts comply with our quality and safety standards.

#### Explanation on the Pressure Equipment Directive

These WEH® Products are generally and exclusively classified as pressure accessories for piping in accordance with Article 2 (5) of the Pressure Equipment Directive 2014/68/EU. These WEH® Products may not be used (i) as safety accessories or (ii) for vessels as defined by the Pressure Equipment Directive 2014/68/EU. Therefore, the application of these WEH® Products must comply with their classification as pressure accessories for piping. The assessment with regard to a different classification can, however, be made on request.

#### External change management

WEH reserves the right to update, optimise and adjust its products continuously. This may result in corresponding changes of the product. Customers will be informed proactively or unsolicited by WEH only in individual cases about product updates, product optimisations and/or product adaptations that have been carried out. You are free to contact WEH at any time to request information about any product updates, product optimisations and/or product adjustments.

© All rights reserved, WEH GmbH. Any unauthorized use is strictly forbidden. Subject to alteration.  
No liability will be assumed for any content. Herewith previous versions are no longer valid.

#### » Contacting

For queries and further information, please do not hesitate to contact us.

Manufacturer:

**WEH GmbH Precision Connectors**

Josef-Henle-Str. 1  
89257 Illertissen / Germany

Phone: +49 7303 9609-0  
Fax: +49 7303 9609-9999

Email: [sales@weh.com](mailto:sales@weh.com)  
[www.weh.com](http://www.weh.com)