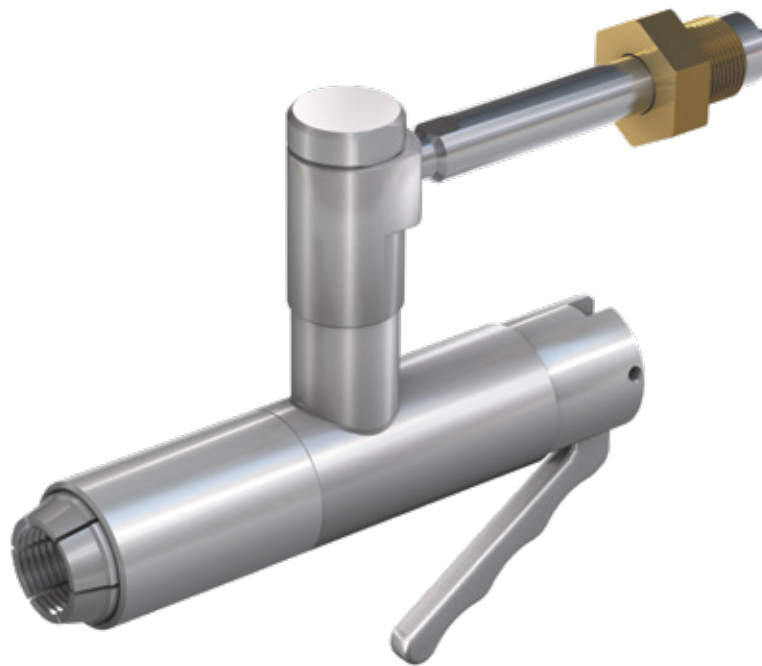


Type **TW156**

WEH[®] Connector for testing respiratory protective equipment

up to max. 4,350 psi



General

DESCRIPTION


Features

- Quick connection in seconds without hand tightening
- Robust design
- Easy connection means no straining of muscles, joints, etc.
- Improves operational safety and ergonomics

The WEH® TW156 Quick connector can be connected to the manual inlet valve of the respiratory protective device without hand tightening. The clamping jaws grip into the thread and the pressure-tight connection is made within seconds. The quick connector may either be mounted directly to the existing test unit or connected by a hose to the test unit. When used with a hose, the connector must be securely anchored when not in use.

The TW156 quick connector simplifies testing procedures and shortens test times and is available with manual or pneumatic actuation.

Application

Quick connector for testing respiratory protective equipment up to max. 4,350 psi.



Connection to SCBAs of fire brigades



Connection to special test unit



Sample of test unit and SCBA

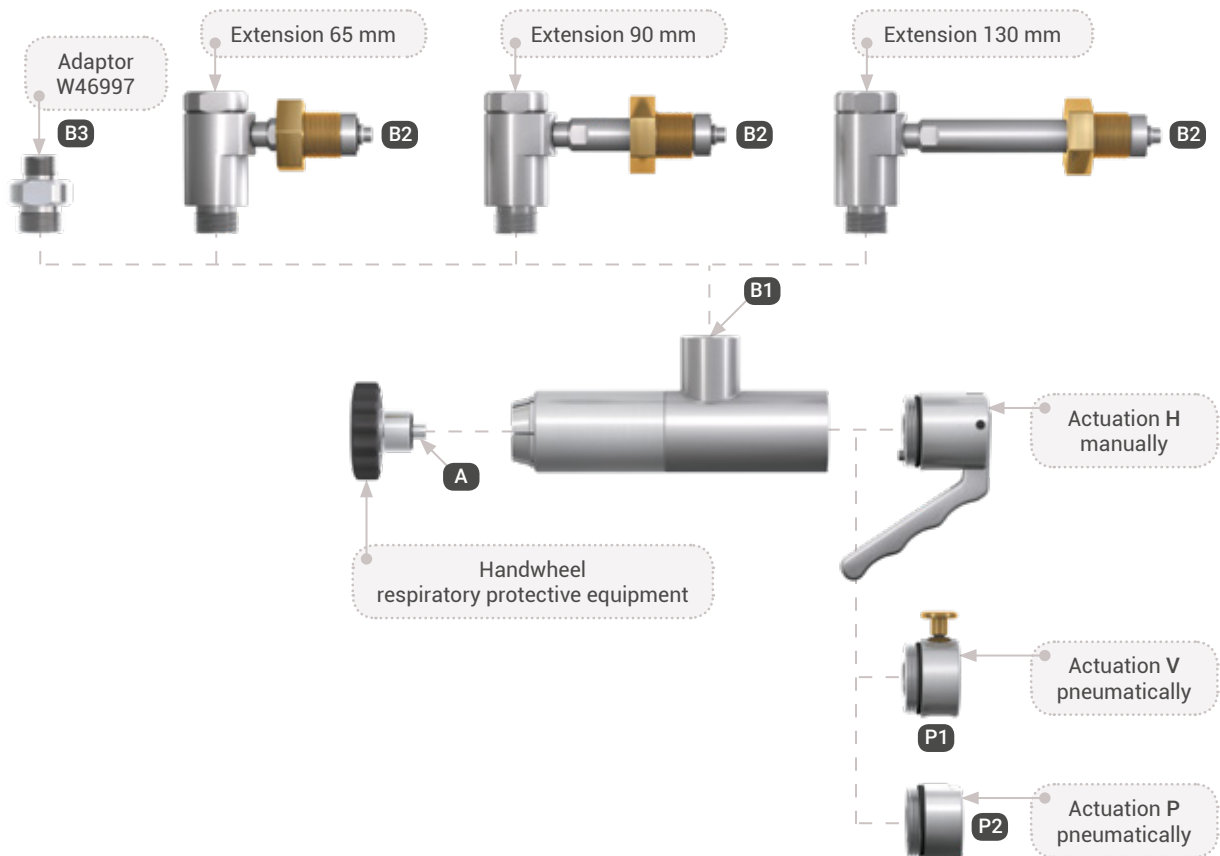
TECHNICAL DATA

Characteristics	Basic version	Options
Pressure range	PN = 4,350 psi PS = 5,440 psi PT = 8195 psi	PN = 3,000 psi PS = 3,600 psi PT = 5,440 psi
Pilot pressure	90 - 175 psi	On request
Temperature range	+41 °F up to +158 °F	On request
Medium	Air	On request
Connection A (respiratory protective equipment)	G5/8" male thread acc. to DIN 477-5 (4,350 psi)	G5/8" male thread acc. to DIN 477-1 (3,000 psi)
Pilot pressure port P1	G1/8" female thread	On request
Pilot pressure port P2	G1/4" female thread	On request
Actuation	H = manual actuation of the hand lever V = actuation via pneumatic / manual finger pressure valve P = pneumatic actuation for automated applications and activations	On request
Material	Corrosion-resistant stainless steel Extensions: chromed / brass	On request
Sealing material	NBR	On request

System overview

SYSTEM OVERVIEW

For the TW156 various actuations and extensions are available. The following diagram shows the different versions.

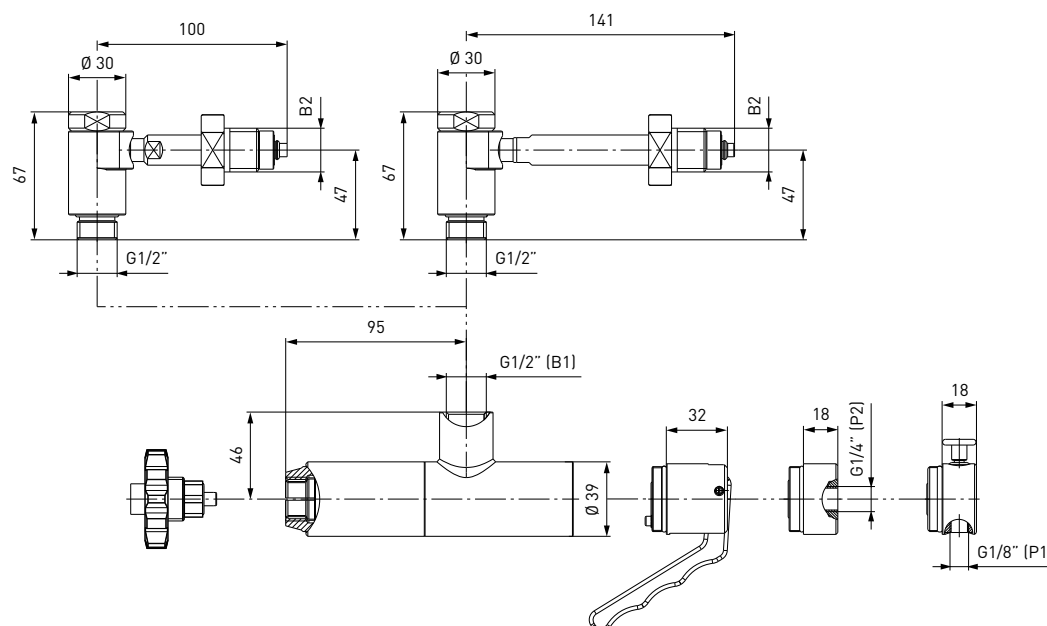

Port definition

A	Connection respiratory protective equipment
B1	Media inlet
B2	Media inlet on versions with extension
B3	Media inlet on versions with adaptor for filling hose G1/2" - M16x1.5
P1	Pilot pressure line (actuation V)
P2	Pilot pressure line (actuation P)

Ordering

ORDERING | Quick connector TW156 with extension 90 / 130 mm for SCBA with carrying system

approx. dimensions (mm)



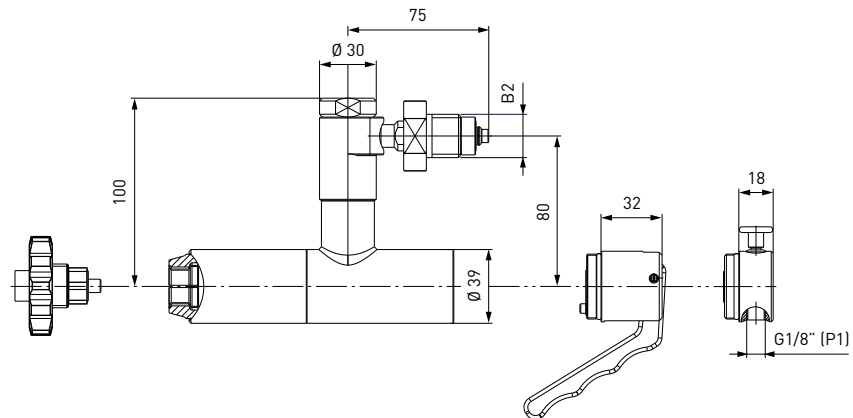
MSA Multicheck / Proficheck



Part No.	Description	Pressure (PN)	Actuation	Inlet B2 (male thread)
C1-33718	Elbow extension 130 mm	4,350 psi	Manually H	G5/8"
C1-55849	Elbow extension 130 mm	4,350 psi	Pneumatically P	G5/8"
C1-75998	Elbow extension 130 mm	4,350 psi	Pneumatically V	G5/8"
C1-55640	Elbow extension 90 mm	4,350 psi	Manually H	G5/8"
C1-88567	Elbow extension 90 mm	4,350 psi	Pneumatically P	G5/8"
C1-94723	Elbow extension 90 mm	4,350 psi	Pneumatically V	G5/8"

Ordering
ORDERING | Quick connector TW156 with extension 65 mm for SCBA with carrying system

approx. dimensions (mm)



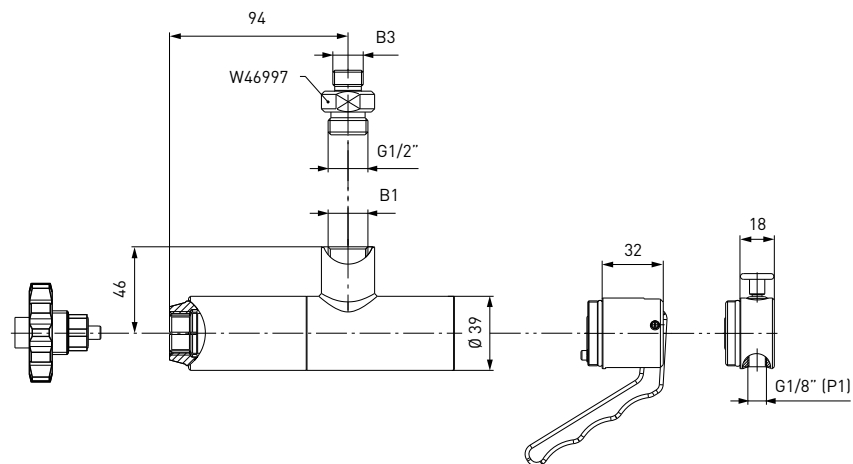
Dräger Quaestor III / Quaestor automatic



Part No.	Description	Pressure (PN)	Actuation	Inlet B2 (male thread)
C1-35615	Elbow extension 65 mm	4,350 psi	Manually H	G5/8"
C1-67670	Elbow extension 65 mm	4,350 psi	Pneumatically V	G5/8"

ORDERING | Quick connector TW156 for SCBA

approx. dimensions (mm)



Part No.	Description	Pressure (PN)	Actuation	Inlet B1 / B3
C1-18581	Without elbow extension (Labtec 100)	4,350 psi	Pneumatically V	G1/2" female thread
C1-33939	Without elbow extension	4,350 psi	Manually H	G1/2" female thread
C1-47019	Incl. adaptor W46997; without elbow extension	4,350 psi	Manually H	G1/2" female thread / M16x1.5 male thread

Hoses not included

Other products

OTHER PRODUCTS

You will find more products in our current catalogue no. 60



Further information on our homepage
www.weh.com

Abbreviations/Definition

Explanation of abbreviations see technical appendix in the catalogue or www.weh.com

Safe product selection

Our WEH® Products are designed to be operated by qualified professional users (insofar as WEH® Products are also designed to be operated by other users in individual cases, this is explicitly stated in the corresponding operating instructions). You alone are responsible for the selection of WEH® Products and their configuration according to the requirements of your system. In doing so, please particularly consider your intended use, your performance data, your material compatibility, your system concept and your system limits as well as your technical and legal requirements for operation, handling and maintenance. The quality and safety of WEH® Products is our highest priority. For this reason, WEH® Products may not be used outside the specifications in the relevant data sheets and product descriptions. We also strongly recommend that you refrain from using third-party spare parts or a combination of WEH® Products with unsuitable third-party products. You alone are responsible for reviewing the suitability of third-party products. WEH® Products and WEH® Spare parts comply with our quality and safety standards.

Explanation on the Pressure Equipment Directive

These WEH® Products are generally and exclusively classified as pressure accessories for piping in accordance with Article 2 (5) of the Pressure Equipment Directive 2014/68/EU. These WEH® Products may not be used (i) as safety accessories or (ii) for vessels as defined by the Pressure Equipment Directive 2014/68/EU. Therefore, the application of these WEH® Products must comply with their classification as pressure accessories for piping. The assessment with regard to a different classification can, however, be made on request.

External change management

WEH reserves the right to update, optimise and adjust its products continuously. This may result in corresponding changes of the product. Customers will be informed proactively or unsolicited by WEH only in individual cases about product updates, product optimisations and/or product adaptations that have been carried out. You are free to contact WEH at any time to request information about any product updates, product optimisations and/or product adjustments.

© All rights reserved, WEH GmbH. Any unauthorized use is strictly forbidden. Subject to alteration.
 No liability will be assumed for any content. Herewith previous versions are no longer valid.

» Contact

For queries and further information, please do not hesitate to contact us.

Manufacturer:

WEH GmbH Precision Connectors
 Josef-Henle-Str. 1
 89257 Illertissen / Germany
 Phone: +49 7303 9609-0
 Email: sales@weh.com
www.weh.com



Distributor US:

WEH Technologies Inc.
 24903 Laguna Edge Drive
 Katy, TX 77494 / USA
 Phone: +1 832 331 0021
 Email: sales@weh.us
www.weh.us