

CLICKMATE™ TW157

Quick connector

for filling air storage cylinders up to 6,000 psi (CGA 346 / CGA 347)

US Patent No. 5,575,510



General

DESCRIPTION



Features

- Connection directly to the standard thread of the cylinder valve (CGA 346/347)
- Quick connections in seconds without hand / wrench tightening
- Filling of air storage cylinders up to 6,000 psi (CGA 346/CGA 347)
- Improving operational safety and ergonomics
- Available with / without bleeding valve

CLICKMATE™ TW157 is designed for filling air storage cylinders. Existing filling systems equipped with wrench-tight nuts and connectors can be converted without problems. **CLICKMATE™ TW157** is rated for pressure ranges up to 6,000 psi. The WEH connector provides a connection in seconds to the CGA thread of the cylinder valve without hand / wrench tightening. Just place the connector onto the cylinder valve until it stops. The connection is made by lowering the operating lever through 90° which locks the split jaws onto the cylinder valve. The integrated safety peg prevents a disconnection under pressure.

Optionally **CLICKMATE™ TW157** is available with an integrated bleeding valve.

The standard version has an operating lever for actuation, an operating handle is available on request.

All connectors are subjected to extensive pressure and long-term tests.

Application

Filling of air storage cylinders in breathing air centers of fire brigades.



CLICKMATE™ TW157 with operating lever and bleeding valve

TECHNICAL DATA

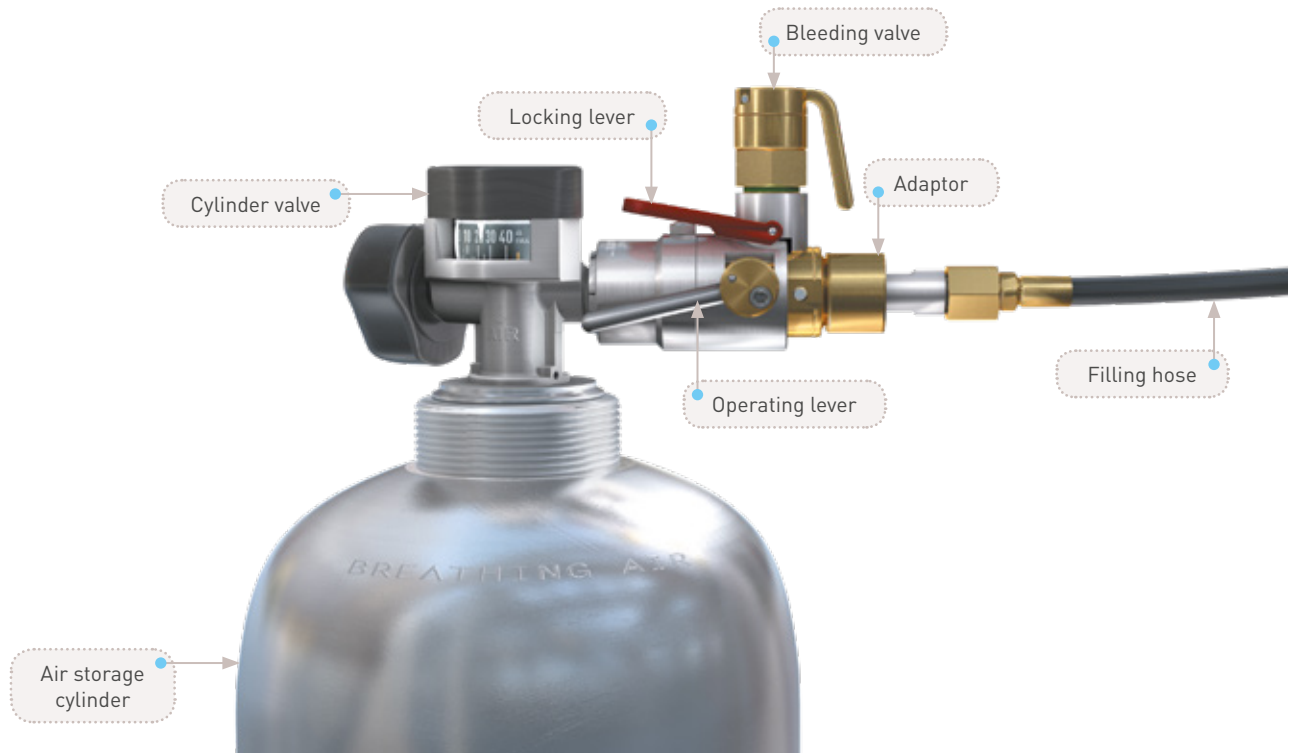
Characteristics	Basic version	Options
Nominal pressure PS	Up to 6,000 psi	On request
Temperature range	+41 °F up to +158 °F (+5 °C up to +70 °C)	On request
Medium	Respiratory air (compressed air)	On request
Cylinder thread size A	Standard connection for CGA 346 (0.825"-14 NGO-RH-EXT large round nipple) CGA 347 (0.825"-14 NGO-RH-EXT long round nipple)	On request
Inlet B	NS 1"-14 external thread	On request
Actuation	Operating lever	Operating handle, others on request.
Material	Brass and corrosion-resistant stainless steel	On request
Sealing material	FKM	On request
Design	Without integrated bleeding valve	With integrated bleeding valve

General

SYSTEM OVERVIEW | CLICKMATE™ TW157 with operating lever

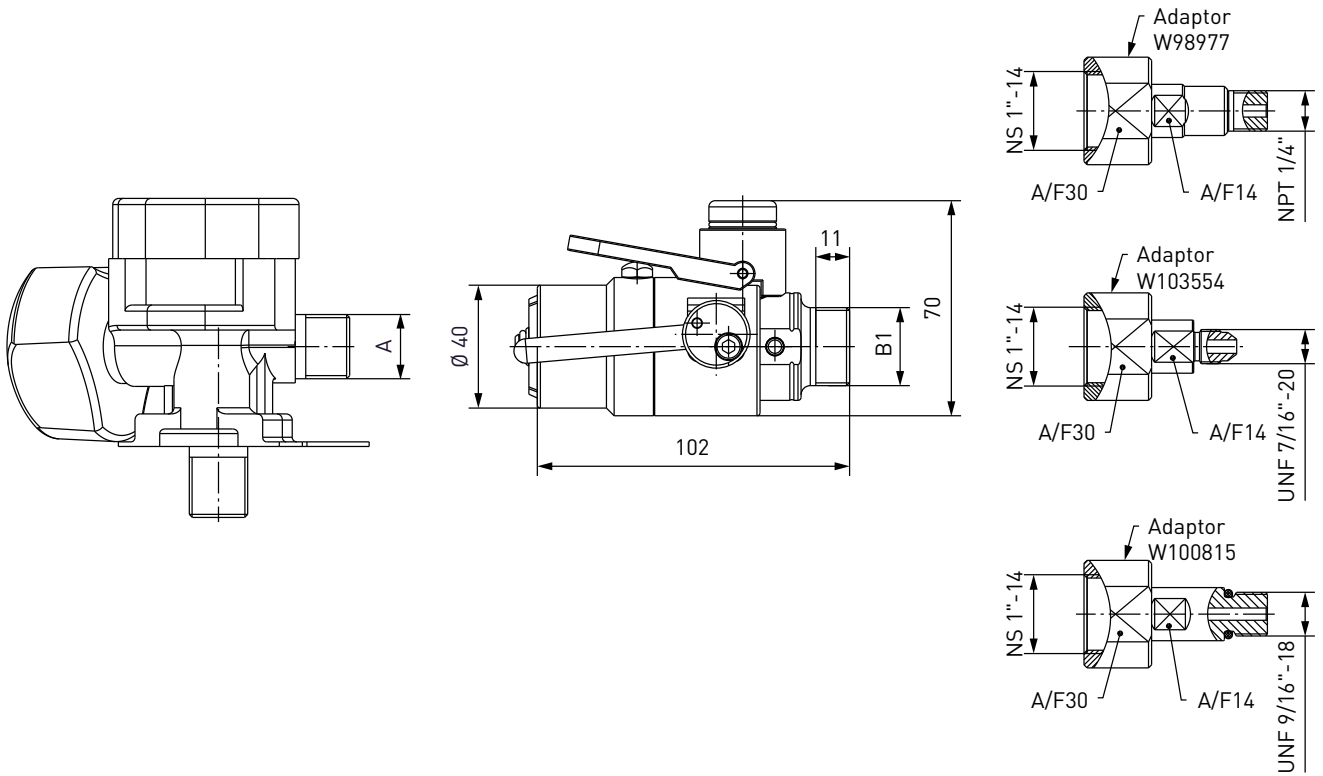


SYSTEM OVERVIEW | CLICKMATE™ TW157 with operating lever and bleeding valve



Ordering

ORDERING



Quick Connector CLICKMATE™ TW157 with operating lever



Part No.	Description	Connection A	Inlet B
C1-102859-X01	CLICKMATE™ TW157 without bleeding valve	0.825" -14 NGO-RH external thread	NS 1" -14 external thread

Quick Connector CLICKMATE™ TW157 with operating lever and bleeding valve



Part No.	Description	Connection A	Inlet B
C1-103581-X01	CLICKMATE™ TW157 with bleeding valve	0.825" -14 NGO-RH external thread	NS 1" -14 external thread

Ordering

Quick Connector CLICKMATE™ TW157 with operating handle



Part No.	Description	Connection A	Inlet B
C1-98975-X01	CLICKMATE™ TW157 without bleeding valve	0.825" -14 NGO-RH external thread	NS 1" -14 external thread

Quick Connector CLICKMATE™ TW157 with operating handle and bleeding valve



Part No.	Description	Connection A	Inlet B
C1-103580-X01	CLICKMATE™ TW157 with bleeding valve	0.825" -14 NGO-RH external thread	NS 1" -14 external thread

ACCESSORIES

The following accessories are available for **CLICKMATE™ TW157**:

Adaptor incl. locking nut

Adaptor for **CLICKMATE™ TW157** for connection to the filling hose.



Part No.	Description	Connection
W98977	For connection to the filling hose	NPT1/4" external thread O-ring plane sealing
W100815	For connection to the filling hose	UNF9/16"-18 external thread O-ring plane sealing
W103554	For connection to the filling hose	UNF 7/16"-20 external thread (37°)

Others on request

Seal sets

Part No.	Description
W103582	Seal set (10 x spare front seal)
W5606	Seal set for safety peg

Other products

OTHER PRODUCTS

You will find more products in our current catalog no. 60



Further information on our homepage
www.weh.com

Abbreviations/Definition

Explanation of abbreviations see technical appendix in the catalogue or www.weh.com

Safe product selection

Our WEH® Products are designed to be operated by qualified professional users (insofar as WEH® Products are also designed to be operated by other users in individual cases, this is explicitly stated in the corresponding operating instructions). You alone are responsible for the selection of WEH® Products and their configuration according to the requirements of your system. In doing so, please particularly consider your intended use, your performance data, your material compatibility, your system concept and your system limits as well as your technical and legal requirements for operation, handling and maintenance. The quality and safety of WEH® Products is our highest priority. For this reason, WEH® Products may not be used outside the specifications in the relevant data sheets and product descriptions. We also strongly recommend that you refrain from using third-party spare parts or a combination of WEH® Products with unsuitable third-party products. You alone are responsible for reviewing the suitability of third-party products. WEH® Products and WEH® Spare parts comply with our quality and safety standards.

Explanation on the Pressure Equipment Directive

These WEH® Products are generally and exclusively classified as pressure accessories for piping in accordance with Article 2 (5) of the Pressure Equipment Directive 2014/68/EU. These WEH® Products may not be used (i) as safety accessories or (ii) for vessels as defined by the Pressure Equipment Directive 2014/68/EU. Therefore, the application of these WEH® Products must comply with their classification as pressure accessories for piping. The assessment with regard to a different classification can, however, be made on request.

External change management

WEH reserves the right to update, optimise and adjust its products continuously. This may result in corresponding changes of the product. Customers will be informed proactively or unsolicited by WEH only in individual cases about product updates, product optimisations and/or product adaptations that have been carried out. You are free to contact WEH at any time to request information about any product updates, product optimisations and/or product adjustments.

© All rights reserved, WEH GmbH. Any unauthorized use is strictly forbidden. Subject to alteration.
 No liability will be assumed for any content. Herewith previous versions are no longer valid.

» Contact

For queries and further information, please do not hesitate to contact us.

Manufacturer:

WEH GmbH Precision Connectors

Josef-Henle-Str. 1
 89257 Illertissen / Germany

Phone: +49 7303 9609-0
 Fax: +49 7303 9609-9999

Email: sales@weh.com
www.weh.com



Distributor US:

WEH Technologies Inc.

24903 Laguna Edge Drive
 Katy, TX 77494 / USA

Phone: +1 832 331 0021
 Fax: +1 281 712 2664

Email: sales@weh.us
www.weh.us