

CLICKMATE™ TW157

for SCOTT RevolveAir Charge Stations

Quick Connector for filling air storage cylinders (SCBA)

up to 6,000 psi (CGA 346 / CGA 347)

US Patent No. 5,575,510



General

DESCRIPTION



Features

- Connection directly to the standard thread of the cylinder valve (CGA 346/347)
- Quick connections in seconds without hand / wrench tightening
- For firmly mounting to SCOTT RevolveAir Charge Station
- Filling of air storage cylinders up to 6,000 psi (CGA 346/CGA 347)
- Improving operational safety and ergonomics

The **CLICKMATE™ TW157** with operating handle is designed for filling air storage cylinders. Retaining the same outstanding technical functionality as our **CLICKMATE™ TW157** with operating lever, the type has been adapted to fit the SCOTT RevolveAir Charge Station. The **CLICKMATE™** is rigidly mounted to the SCOTT Charge Station and provides an instant connection to the CGA thread of the cylinder valve without hand / wrench tightening. Just connect the cylinder valve thread to the **CLICKMATE™**. The connection is made by lowering the operating handle through 90° which locks the split jaws onto the cylinder valve. The integrated safety peg prevents a disconnection under pressure. The **CLICKMATE™ TW157** is rated for pressure ranges up to 6,000 psi.

All connectors are subjected to extensive pressure and long-term tests.

Application

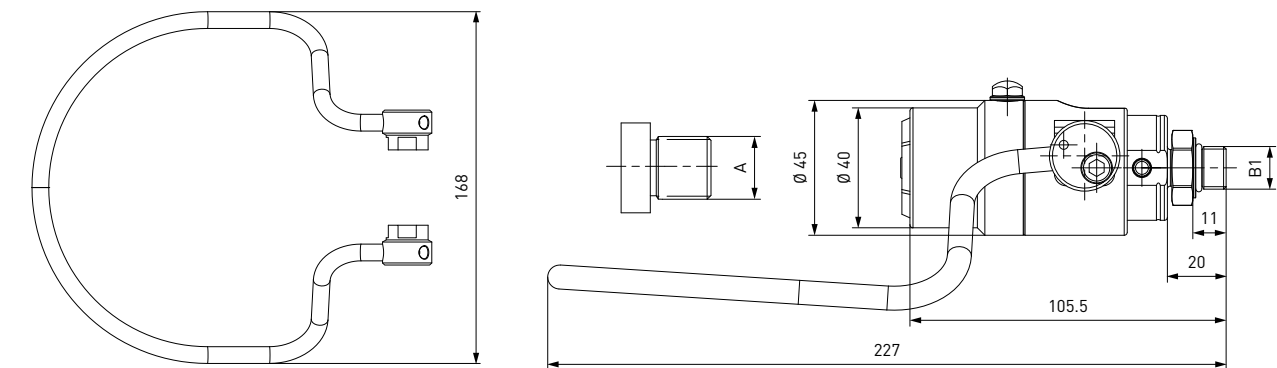
Filling of air storage cylinders in SCOTT RevolveAir Charge Stations.

TECHNICAL DATA

Characteristics	Basic version	Options
Nominal pressure PS	Up to 6,000 psi	On request
Temperature range	+41 °F up to +158 °F (+5 °C up to +70 °C)	On request
Medium	Respiratory air (compressed air)	On request
Cylinder thread size A	Standard connection for CGA 346 (0.825"-14 NGO-RH-EXT large round nipple) CGA 347 (0.825"-14 NGO-RH-EXT long round nipple)	On request
Actuation	Operating handle	On request.
Material	Brass and corrosion-resistant stainless steel	On request
Sealing material	FKM	On request
Design	Without integrated bleeding valve	On request

Ordering

ORDERING | CLICKMATE™ TW157 with operating handle



Part No.	Description	Inlet B
C1-121092-X01	CLICKMATE™ TW157	UNF 9/16" -18 external thread

Spare parts

The following parts are available as spares for the CLICKMATE™ TW157:

Part No.	Description
W5606	Safety peg seal set including metal parts

Other products

OTHER PRODUCTS

You will find more products in our current catalog no. 60



Further information on our homepage
www.weh.com

Abbreviations/Definition

Explanation of abbreviations see technical appendix in the catalogue or www.weh.com

Safe product selection

Our WEH® Products are designed to be operated by qualified professional users (insofar as WEH® Products are also designed to be operated by other users in individual cases, this is explicitly stated in the corresponding operating instructions). You alone are responsible for the selection of WEH® Products and their configuration according to the requirements of your system. In doing so, please particularly consider your intended use, your performance data, your material compatibility, your system concept and your system limits as well as your technical and legal requirements for operation, handling and maintenance. The quality and safety of WEH® Products is our highest priority. For this reason, WEH® Products may not be used outside the specifications in the relevant data sheets and product descriptions. We also strongly recommend that you refrain from using third-party spare parts or a combination of WEH® Products with unsuitable third-party products. You alone are responsible for reviewing the suitability of third-party products. WEH® Products and WEH® Spare parts comply with our quality and safety standards.

Explanation on the Pressure Equipment Directive

These WEH® Products are generally and exclusively classified as pressure accessories for piping in accordance with Article 2 (5) of the Pressure Equipment Directive 2014/68/EU. These WEH® Products may not be used (i) as safety accessories or (ii) for vessels as defined by the Pressure Equipment Directive 2014/68/EU. Therefore, the application of these WEH® Products must comply with their classification as pressure accessories for piping. The assessment with regard to a different classification can, however, be made on request.

External change management

WEH reserves the right to update, optimise and adjust its products continuously. This may result in corresponding changes of the product. Customers will be informed proactively or unsolicited by WEH only in individual cases about product updates, product optimisations and/or product adaptations that have been carried out. You are free to contact WEH at any time to request information about any product updates, product optimisations and/or product adjustments.

© All rights reserved, WEH GmbH. Any unauthorized use is strictly forbidden. Subject to alteration.
No liability will be assumed for any content. Herewith previous versions are no longer valid.

» Contact

For queries and further information, please do not hesitate to contact us.

Manufacturer:

WEH GmbH Precision Connectors

Josef-Henle-Str. 1
89257 Illertissen / Germany

Phone: +49 7303 9609-0
Fax: +49 7303 9609-9999

Email: sales@weh.com
www.weh.com



Distributor US:

WEH Technologies Inc.

24903 Laguna Edge Drive
Katy, TX 77494 / USA

Phone: +1 832 331 0021
Fax: +1 281 712 2664

Email: sales@weh.us
www.weh.us