

Type **TW19**

WEH[®] Connector for pneumatic and oil-hydraulic pressure and function testing
of components with female thread



General

DESCRIPTION



Features

- Connection in seconds
- No hand tightening required
- WEH® Jaw locking mechanism
- High-grade materials

The WEH® TW19 Quick connector is especially designed for sealing hydraulic components with female thread in high and low pressure applications. The clamping lever actuated connector safely grips into the test piece, even in case of high lateral forces, e.g. heavy or rigid hoses. The higher the test pressure the tighter the WEH® Connector will clamp itself into the thread of the test piece. The front o-ring reliably seals the connection and no additional clamping devices are required. Having only one seal in the interior of the connector, ease of maintenance is provided.

Application

Quick connector for pneumatic and oil-hydraulic pressure and function testing of components with female thread, e.g. hydraulic aggregates.

TECHNICAL DATA

Characteristics	Basic version
Operating pressure PS	Vacuum up to max. 5,000 psi
Temperature range	+41 °F up to +176 °F
Leak rate	1×10^{-3} mbar x l/s
Actuation	Manual actuation via clamping lever
Material	Corrosion resistant stainless steel
Sealing material	NBR

Other designs on request

Note: Please contact us when using corrosive media or water!

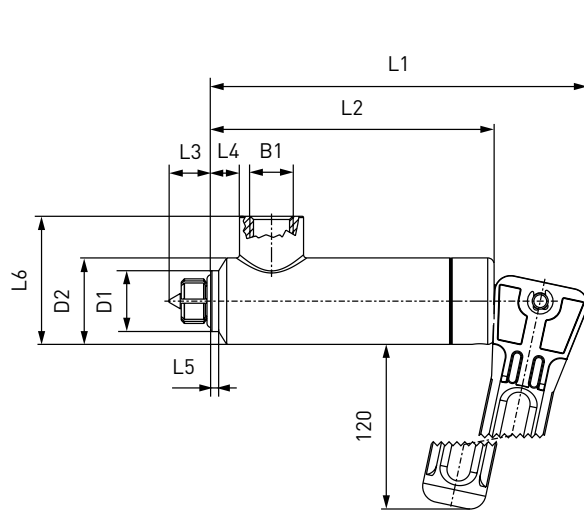
Example of use:



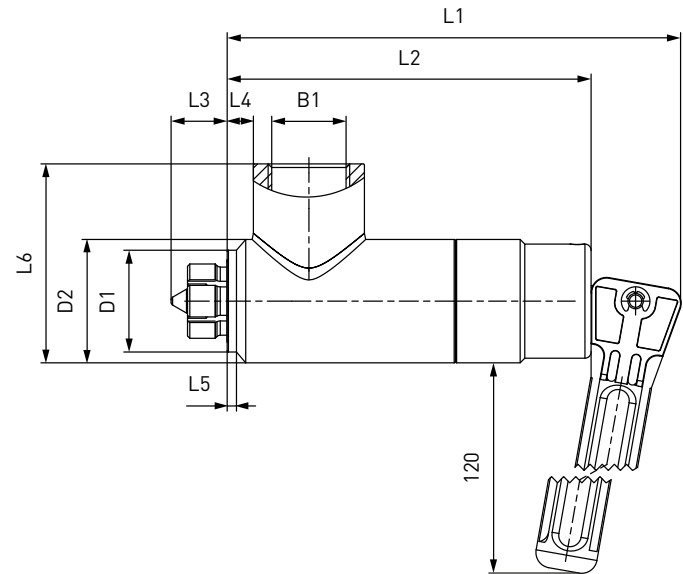
Ordering

ORDERING | WEH® TW19 Quick connector

approx. dimensions (mm)



Body size 2 - 4



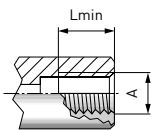
Body size 5 - 6

Body size	Inlet B1** (female thread)	D1	D1*	D2	D2*	L1	L2	L3	L4	L5	L5*	L6
2	1/4" NPT	19.0	20.5	27.0	27.0	118.0	88.5	13.0	9.0	2.5	5.0	40.0
3	3/8" NPT	23.0	26.0	32.0	32.0	131.0	101.5	16.0	9.5	2.0	4.0	50.0
4	1/2" NPT	27.0	29.0	37.0	37.0	131.0	101.5	17.0	8.0	3.0	4.0	55.0
5	3/4" NPT	33.0	40.5	40.0	45.0	146.0	117.0	19.5	8.0	3.0	8.0	69.0
6	1" NPT	40.0	46.5	49.0	49.0	170.0	140.0	17.0	18.0	3.0	8.0	74.0

* applies to SAE J1926

** metric threads (G) available on request

Metric ISO-thread to DIN 13 - acc. to DIN 3852 part 1, form X and Y

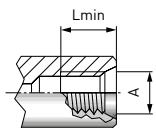


Part No.	Body size	Thread A (female thread)	Lmin*
C1-124801	2	M12x1.5	9.5
C1-124802	2	M14x1.5	9.5
C1-16862	3	M16x1.5	10.5
C1-32257	3	M18x1.5	10.5
C1-48676	4	M20x1.5	10.5
C1-124803	4	M22x1.5	10.5
On request	5	M24x1.5	11.0
C1-60458	5	M26x1.5	11.0
On request	6	M30x1.5	12.5

* Lmin: minimum thread length

Ordering

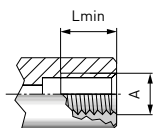
Metric ISO thread to DIN 13 - acc. to ISO 6149-1



Part No.	Body size	Thread A (female thread)	Lmin*
C1-16287	2	M12x1.5	9.5
C1-16288	2	M14x1.5	9.5
C1-16289	3	M16x1.5	10.5
C1-16290	3	M18x1.5	10.5
On request	4	M20x1.5	10.5
C1-16291	4	M22x1.5	10.5
C1-36110	5	M27x2.0	11.0
On request	6	M30x1.5	12.5

* Lmin: minimum thread length

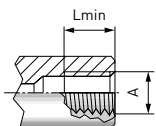
Whitworth tube thread to DIN EN ISO 228-1 - acc. to DIN 3852 part 2, form X and Y



Part No.	Body size	Thread A (female thread)	Lmin*
C1-16277	2	G1/4"	9.5
C1-16278	3	G3/8"	10.5
C1-16279	4	G1/2"	10.5
On request	4	G5/8"	10.5
C1-16174	5	G3/4"	11.0
C1-16281	6	G1"	12.5

* Lmin: minimum thread length

BSPT (tapered Whitworth tube thread) - acc. to DIN 3852 part 2, form X and Y

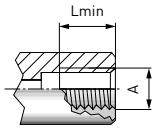


Part No.	Body size	Thread A (female thread)	Lmin*
C1-16282	2	1/4" BSPT	9.5
C1-16283	3	3/8" BSPT	10.5
C1-16284	4	1/2" BSPT	10.5
On request	4	5/8" BSPT	10.5
C1-16179	5	3/4" BSPT	11.0
C1-16286	6	1" BSPT	12.5

* Lmin: minimum thread length

Ordering

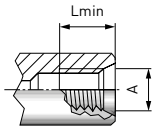
NPT thread (ANSI/ASME B1.20.1-1983) - acc. to SAE J476a



Part No.	Body size	Thread A (female thread)	Lmin*
C1-16262	2	1/4" NPT	9.5
C1-16263	3	3/8" NPT	10.5
C1-16264	4	1/2" NPT	10.5
On request	4	5/8" NPT	10.5
C1-72167	5	3/4" NPT	11.0
C1-16266	6	1" NPT	12.5

* Lmin: minimum thread length

SAE-O-Ring Boss - acc. to SAE J1926 / ISO 11926



Part No.	Body size	Thread A (UNF/UN female thread)	Lmin*
C1-16267	2	-5 (1/2"-20)	9.5
C1-16268	2	-6 (9/16"-18)	9.5
C1-16269	3	-8 (3/4"-16)	10.5
C1-16270	4	-10 (7/8"-14)	10.5
C1-15839	5	-12 (1 1/16"-12)	11.0
C1-32370	6	-14 (1 3/16"-12)	11.0
C1-16272	6	-16 (1 5/16"-12)	11.0

* Lmin: minimum thread length

Other connector sizes and versions on request.

Required information for ordering see page 9, catalog no. 35.

Accessories

ACCESSORIES

The following accessories are available for WEH® TW19:

Screw plug

If the WEH® Connector is to be used as a plug, the media inlet 'B1' will be sealed with a screw plug of brass (PVC sealing ring) for low pressure range or alternatively of stainless steel (O-ring of NBR 70° Shore) for high pressure range. It is recommended that the media compatibility of the seal be tested by the customer!

Low pressure



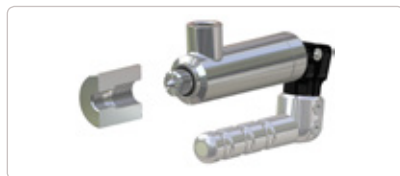
High pressure

Part No. G-thread*	Description	Connection (male thread)	Pressure range
E69-9210	Screw plug (low pressure)	G1/4"	0 - 725 psi (0 - 50 bar)
E69-9220	Screw plug (low pressure)	G3/8"	0 - 725 psi (0 - 50 bar)
E69-9230	Screw plug (low pressure)	G1/2"	0 - 725 psi (0 - 50 bar)
W9338	Screw plug (low pressure)	G3/4"	0 - 725 psi (0 - 50 bar)
W9330	Screw plug (high pressure)	G1/4"	725 - 5,000 psi (50 - 350 bar)
W9331	Screw plug (high pressure)	G3/8"	725 - 5,000 psi (50 - 350 bar)
W9332	Screw plug (high pressure)	G1/2"	725 - 5,000 psi (50 - 350 bar)
W9333	Screw plug (high pressure)	G3/4"	725 - 5,000 psi (50 - 350 bar)
W9334	Screw plug (high pressure)	G1"	725 - 5,000 psi (50 - 350 bar)

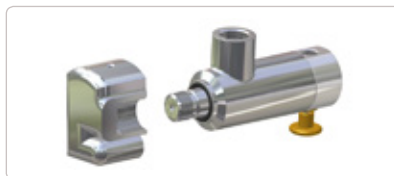
* NPT-thread on request

SPECIAL SOLUTIONS

Examples:



TW19 with parallel clamping lever



TW19 short version
with V-actuation



TW19 with 45° lateral port
and location lug

Other products

OTHER PRODUCTS

You will find more products in our current catalog no. 35



Further information on our homepage
www.weh.com

Abbreviations/Definition

Explanation of abbreviations see technical appendix in the catalogue or www.weh.com

Safe product selection

Our WEH® Products are designed to be operated by qualified professional users (insofar as WEH® Products are also designed to be operated by other users in individual cases, this is explicitly stated in the corresponding operating instructions). You alone are responsible for the selection of WEH® Products and their configuration according to the requirements of your system. In doing so, please particularly consider your intended use, your performance data, your material compatibility, your system concept and your system limits as well as your technical and legal requirements for operation, handling and maintenance. The quality and safety of WEH® Products is our highest priority. For this reason, WEH® Products may not be used outside the specifications in the relevant data sheets and product descriptions. We also strongly recommend that you refrain from using third-party spare parts or a combination of WEH® Products with unsuitable third-party products. You alone are responsible for reviewing the suitability of third-party products. WEH® Products and WEH® Spare parts comply with our quality and safety standards.

Explanation on the Pressure Equipment Directive

These WEH® Products are generally and exclusively classified as pressure accessories for piping in accordance with Article 2 (5) of the Pressure Equipment Directive 2014/68/EU. These WEH® Products may not be used (i) as safety accessories or (ii) for vessels as defined by the Pressure Equipment Directive 2014/68/EU. Therefore, the application of these WEH® Products must comply with their classification as pressure accessories for piping. The assessment with regard to a different classification can, however, be made on request.

External change management

WEH reserves the right to update, optimise and adjust its products continuously. This may result in corresponding changes of the product. Customers will be informed proactively or unsolicited by WEH only in individual cases about product updates, product optimisations and/or product adaptations that have been carried out. You are free to contact WEH at any time to request information about any product updates, product optimisations and/or product adjustments.

© All rights reserved, WEH GmbH. Any unauthorized use is strictly forbidden. Subject to alteration.
No liability will be assumed for any content. Herewith previous versions are no longer valid.

» Contacting

For queries and further information, please do not hesitate to contact us.

Manufacturer:

WEH GmbH Precision Connectors

Josef-Henle-Str. 1
89257 Illertissen / Germany

Phone: +49 7303 9609-0
Fax: +49 7303 9609-9999

Email: sales@weh.com
www.weh.com