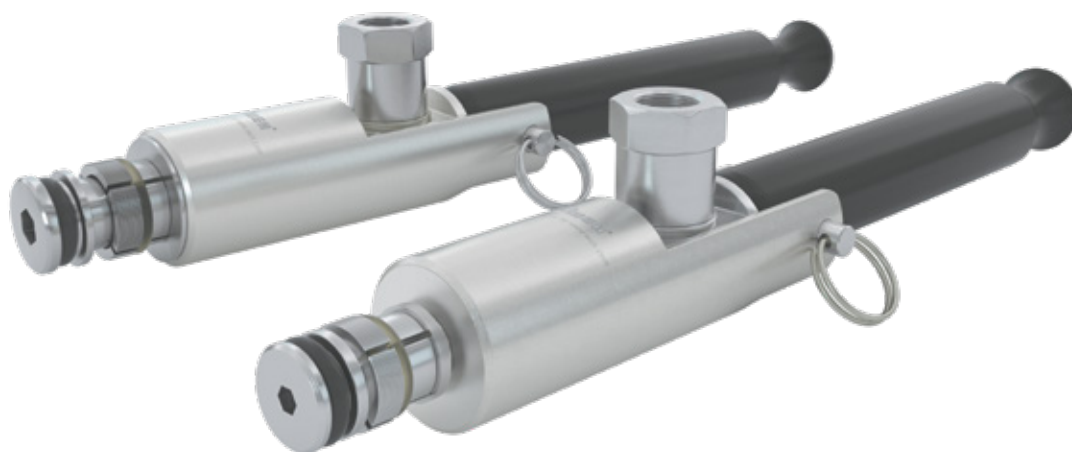


Type **TW230**

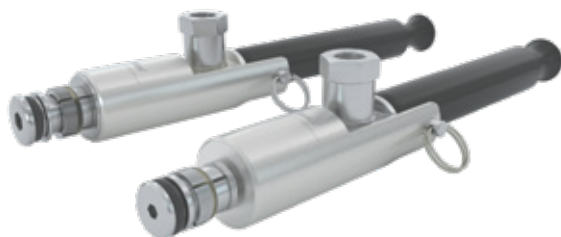
WEH[®] Connector for pressure and vacuum testing

of straight tubes and bores (internal tube Ø 9.5 mm - 22.2 mm)



General

DESCRIPTION



Features

- Connection in seconds
- No hand tightening required
- For connection into straight tubes and bores
- WEH® Jaw locking mechanism
- No seal adjustment required
- Wide range of tube tolerances up to ± 0.25 mm
- High-grade materials

With the WEH® TW230 Quick connector straight tubes of copper, steel or aluminium can be easily tested for leak tightness in just seconds. The radial sealing system reliably seals inside tube and bore diameters from 9.5 mm to 22.2 mm and bridges tube tolerances of up to ± 0.25 mm (required roundness of internal tube diameter max. 0.25 mm).

Connection to the straight tube is established by manual actuation of the clamping lever. Thanks to the WEH® Jaw locking mechanism the connector is securely located in the straight tube and the wear of the test piece is minimized as surface pressure is very low.

The TW230 is also suited for underwater, pressure decay and helium tests.

The WEH® TW230 is equipped with a NBR front seal. Other sealing materials on request. It is the customer's responsibility to clarify the media compatibility.

Application

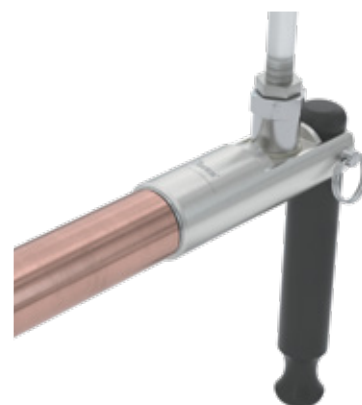
Quick connector for pressure and vacuum testing of straight tubes and bores (sealing the internal tube diameter), as for example heat exchangers, pressure vessels, valves, transducers, compressors, condensers, evaporation coils, component and tubing systems, air conditioners, heating systems etc.

TECHNICAL DATA

Characteristic	Basic version
Nominal bore DN	2 to 5 mm, acc. to design
Max. allowable operating pressure PS	Vacuum up to 70 bar
Temperature range	+5 °C up to +80 °C
Leak rate	1×10^{-3} mbar x l/s
Surface finish of test piece	Rz8 μ m
Material hardness of test piece	28 HRC
Material	Clamping jaws: Corrosion-resistant stainless steel, hardened Housing: Anodized aluminium
Sealing material	Front seal of NBR

Other designs on request

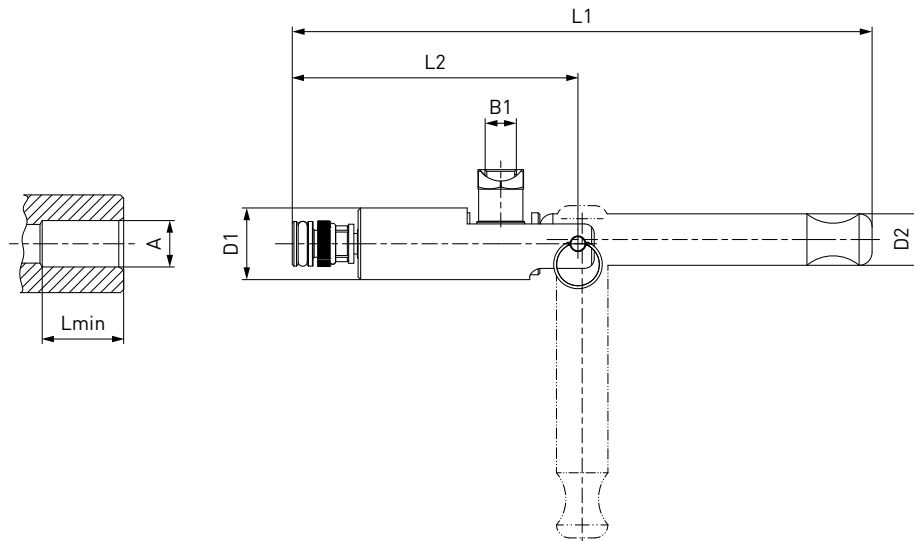
Example of use:



Ordering

ORDERING | WEH® TW230 Quick connector – body size 1

approx. dimensions (mm)



Part No.	Body size	Sealing range internal tube Ø A ± 0.25	B1 (internal thread)	D1	D2	L1	L2	Lmin*	Replacement seal set (consisting of 5 front seals + 1 retaining ring for the clamping jaws)
C1-128668	1	9.5 (3/8")	G1/8"	22	16	178	87.5	13.5	B200B-129358
C1-128734	1	10.0	G1/8"	22	16	178	87.5	13.5	B200B-129364
C1-128432	1	10.5	G1/8"	22	16	178	87.5	13.5	B200B-129369
C1-128742	1	11.0 (7/16")	G1/8"	22	16	178	87.5	13.5	B200B-129373
C1-128745	1	11.5	G1/8"	22	16	178	87.5	13.5	B200B-129376
C1-128750	1	12.0	G1/8"	22	16	178	87.5	13.5	B200B-129381
C1-128754	1	12.5	G1/8"	22	16	178	87.5	13.5	B200B-129385
C1-128756	1	12.7 (1/2")	G1/8"	22	16	178	87.5	13.5	B200B-129387
C1-128758	1	13.0	G1/8"	22	16	178	87.5	13.5	B200B-129389
C1-128763	1	13.5	G1/8"	22	16	178	87.5	13.5	B200B-129394
C1-128767	1	14.0	G1/8"	22	16	178	87.5	13.5	B200B-129398

* Lmin: minimum insertion length of test piece

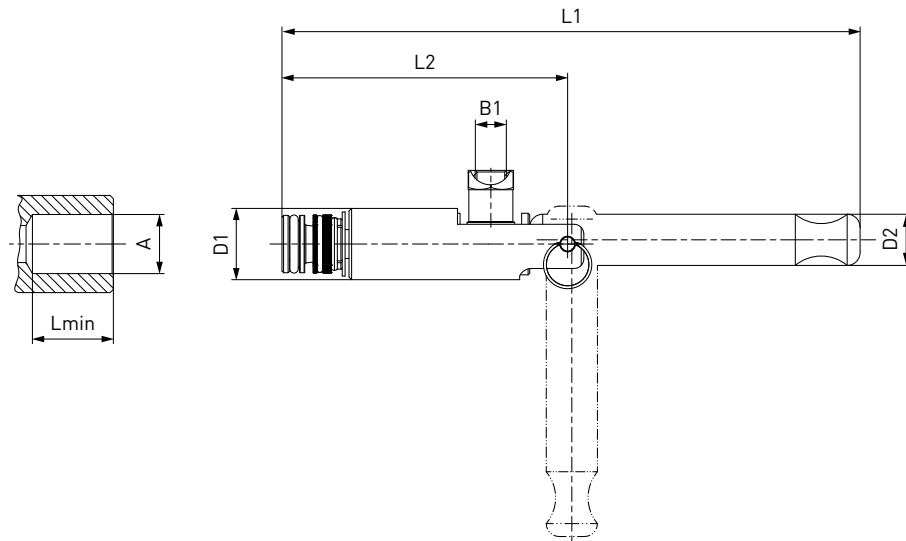
When ordering, please state if testing reinforced fibre glass or plastic test pieces.

Note: required roundness of internal tube diameter max. 0.25 mm

Ordering

ORDERING | WEH® TW230 Quick connector – body size 2

approx. dimensions (mm)



Part No.	Body size	Sealing range internal tube Ø A ± 0.25	B1 (internal thread)	D1	D2	L1	L2	Lmin*	Replacement seal set** (consisting of 5 front seals + 2 retaining rings for the clamping jaws)
C1-128770	2	14.5	G1/8"	22	16	178.5	88	16.0	B200B-129401
C1-128774	2	15.0	G1/8"	22	16	178.5	88	16.0	B200B-129405
C1-128778	2	15.5	G1/8"	22	16	178.5	88	16.0	B200B-129409
C1-128782	2	15.9 (5/8")	G1/8"	22	16	178.5	88	16.0	B200B-129414
C1-128783	2	16.0	G1/8"	22	16	178.5	88	16.0	B200B-129415
C1-128789	2	16.5	G1/8"	22	16	178.5	88	16.0	B200B-129421
C1-128792	2	17.0	G1/8"	22	16	178.5	88	16.0	B200B-129424
C1-128796	2	17.5	G1/8"	22	16	178.5	88	16.0	B200B-129434
C1-128798	2	18.0	G1/8"	22	16	178.5	88	16.0	B200B-129436
C1-128802	2	18.5	G1/8"	22	16	178.5	88	16.0	B200B-129441
C1-128805	2	19.05 (3/4")	G1/8"	22	16	178.5	88	16.0	B200B-129445
C1-128809	2	19.5	G1/8"	22	16	178.5	88	16.0	B200B-129449
C1-128810	2	20.0	G1/8"	22	16	178.5	88	16.0	B200B-129450
C1-128813	2	20.5	G1/8"	22	16	178.5	88	16.0	B200B-129453
C1-128816	2	21.0	G1/8"	22	16	178.5	88	16.0	B200B-129456
C1-128818	2	21.5	G1/8"	22	16	178.5	88	16.0	B200B-129458
C1-128820	2	22.0	G1/8"	22	16	178.5	88	16.0	B200B-129460
C1-128821	2	22.2 (7/8")	G1/8"	22	16	178.5	88	16.0	B200B-129461

* Lmin: minimum insertion length of test piece

** Replacement seal sets for body size 2 with a sealing range < 15.9 mm only contain 1 retaining ring for the clamping jaws

Additional sizes are available up to sealing range 40.0 mm.

When ordering, please state if testing reinforced fibre glass or plastic test pieces.

Note: required roundness of internal tube diameter max. 0.25 mm

The TW230 quick connector is available in 0.5 mm steps starting from 9.5 mm up to 40.0 mm as well as all standard imperial sizes. Please contact us!

Other connector sizes and versions on request. Required information for ordering see page 7, catalogue no. 40.

Accessories

ACCESSORIES

The following accessories are available for the WEH® TW230:

Screw plug

If the WEH® Connector is to be used as a plug, the media inlet 'B1' will be sealed with a screw plug of brass (PVC sealing ring) for low pressure range or alternatively of stainless steel (O-ring of NBR 70° Shore) for high pressure range. It is recommended that the media compatibility of the seal be tested by the customer!

Low pressure



High pressure

Part No.	Description	Connection (external thread)	Pressure range
E69-9200	Screw plug (low pressure)	G1/8"	0 - 50 bar
W9329	Screw plug (high pressure)	G1/8"	50 - 350 bar

Other products

OTHER PRODUCTS

You will find more products in our current catalogue no. 40



Further information on our homepage
www.weh.com

Abbreviations/Definition

Explanation of abbreviations see technical appendix in the catalogue or www.weh.com

Safe product selection

Our WEH® Products are designed to be operated by qualified professional users (insofar as WEH® Products are also designed to be operated by other users in individual cases, this is explicitly stated in the corresponding operating instructions). You alone are responsible for the selection of WEH® Products and their configuration according to the requirements of your system. In doing so, please particularly consider your intended use, your performance data, your material compatibility, your system concept and your system limits as well as your technical and legal requirements for operation, handling and maintenance. The quality and safety of WEH® Products is our highest priority. For this reason, WEH® Products may not be used outside the specifications in the relevant Product data sheets and product descriptions. We also strongly recommend that you refrain from using third-party spare parts or a combination of WEH® Products with unsuitable third-party products. You alone are responsible for reviewing the suitability of third-party products. WEH® Products and WEH® Spare parts comply with our quality and safety standards.

Explanation on the Pressure Equipment Directive

These WEH® Products are generally and exclusively classified as pressure accessories for piping in accordance with Article 2 (5) of the Pressure Equipment Directive 2014/68/EU. These WEH® Products may not be used (i) as safety accessories or (ii) for vessels as defined by the Pressure Equipment Directive 2014/68/EU. Therefore, the application of these WEH® Products must comply with their classification as pressure accessories for piping. The assessment with regard to a different classification can, however, be made on request.

External change management

WEH reserves the right to update, optimise and adjust its products continuously. This may result in corresponding changes of the product. Customers will be informed proactively or unsolicited by WEH only in individual cases about product updates, product optimisations and/or product adaptations that have been carried out. You are free to contact WEH at any time to request information about any product updates, product optimisations and/or product adjustments.

© All rights reserved, WEH GmbH. Any unauthorized use is strictly forbidden. Subject to alteration.
No liability will be assumed for any content. Herewith previous versions are no longer valid.

» Contacting

For queries and further information, please do not hesitate to contact us.

Manufacturer:

WEH GmbH Precision Connectors

Josef-Henle-Str. 1
89257 Illertissen / Germany

Phone: +49 7303 9609-0
Fax: +49 7303 9609-9999

Email: sales@weh.com
www.weh.com