

Type **TW850**

WEH[®] Connector for pressure and function testing

of components with bead, rim, collar, flange, stub or male thread



General

DESCRIPTION



Features

- Connection in seconds
- No hand tightening required
- WEH® jaw locking mechanism
- High-grade materials
- Special versions possible

The WEH® TW850 Quick connector simplifies work procedures, shortens test times and improves productivity. Therefore the connector is ideal for high pressure and function testing of components with a bead, rim, collar, flange, stub or male thread. By using high quality stainless steel the connectors meet the stringent requirements of industrial testing. The TW850 quick connector is designed for a pressure range up to max. 9,135 psi.

Application

Quick connector for pressure and function testing of components with bead, rim, collar, flange, stub or male thread, e.g. pressure vessels, compressors, heat exchangers, measuring devices, hoses, tubes, tanks, etc.

Note: For using the WEH® Connectors with pneumatic actuation and clamping jaws in an automated system please observe the technical note on page 89 in catalog no. 35.

TECHNICAL DATA

Characteristics	Basic version
Operating pressure PS*	Vacuum up to max. 9,135 psi
Temperature range	+41 °F up to +176 °F
Leak rate	1×10^{-3} mbar x l/s
Material	Corrosion resistant stainless steel
Sealing material	NBR

* depending on application

Other designs on request

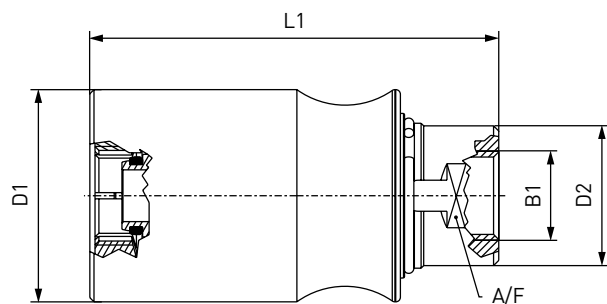
Example of use:



Ordering

ORDERING | WEH® TW850 Quick connector

approx. dimensions (mm)

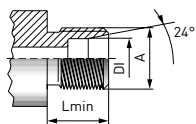


Body size	Inlet B1* (female thread)	D1	D2	L1	A/F
1	1/8" NPT	36.0	22.0	75.0	19
2	3/8" NPT	41.0	27.0	80.0	24
3	3/8" NPT	46.0	30.0	80.0	27
4	1/2" NPT	52.0	33.0	120.0	30

* metric threads (G) available on request

Other body sizes on request

Tube connection to DIN 3902 - Threaded stem acc. to DIN 3853, boring form W acc. to DIN 3861



Part No.	Body size	Thread A (male thread)	Max. operating pressure**	DI max.	Series	Lmin*
On request	1	M10x1.0	1,450 psi	6.0	LL	8.0
On request	1	M12x1.0	1,450 psi	8.0	LL	9.0
On request	1	M12x1.5	3,600 psi	6.0	L	10.0
On request	1	M14x1.5	3,600 psi	8.0	L	10.0
C1-98312	2	M16x1.5	3,600 psi	10.0	L	11.0
On request	2	M18x1.5	3,600 psi	12.0	L	11.0
On request	3	M22x1.5	3,600 psi	15.0	L	12.0
C1-98311	4	M26x1.5	2,320 psi	18.0	L	12.0
On request	4	M30x2.0	2,320 psi	22.0	L	14.0
On request	1	M14x1.5	9,135 psi	6.0	S	12.0
On request	2	M16x1.5	9,135 psi	8.0	S	12.0
On request	2	M18x1.5	9,135 psi	10.0	S	12.0
On request	2	M20x1.5	9,135 psi	12.0	S	12.0
On request	3	M24x1.5	5,800 psi	16.0	S	14.0
On request	4	M30x2.0	5,800 psi	20.0	S	16.0

* Lmin: minimum thread length

** acc. to ISO 8434-1

Other connector sizes and versions on request.

Required information for ordering see page 9, catalog no. 35.

Ordering

ACCESSORIES

The following accessories are available for WEH® TW850:

Screw plug

If the WEH® Connector is to be used as a plug, the media inlet 'B1' will be sealed with a screw plug of stainless steel (O-ring of NBR 70° Shore) for high pressure range. It is recommended that the media compatibility of the seal be tested by the customer!



Part No. G-thread*	Description	Connection (male thread)	Pressure range
W9329	Screw plug (high pressure)	G1/8"	725 - 5,000 psi (50 - 350 bar)
W9331	Screw plug (high pressure)	G3/8"	725 - 5,000 psi (50 - 350 bar)
W9332	Screw plug (high pressure)	G1/2"	725 - 5,000 psi (50 - 350 bar)

* NPT-thread on request

Other products

OTHER PRODUCTS

You will find more products in our current catalog no. 35



Further information on our homepage
www.weh.com

Abbreviations/Definition

Explanation of abbreviations see technical appendix in the catalogue or www.weh.com

Safe product selection

Our WEH® Products are designed to be operated by qualified professional users (insofar as WEH® Products are also designed to be operated by other users in individual cases, this is explicitly stated in the corresponding operating instructions). You alone are responsible for the selection of WEH® Products and their configuration according to the requirements of your system. In doing so, please particularly consider your intended use, your performance data, your material compatibility, your system concept and your system limits as well as your technical and legal requirements for operation, handling and maintenance. The quality and safety of WEH® Products is our highest priority. For this reason, WEH® Products may not be used outside the specifications in the relevant data sheets and product descriptions. We also strongly recommend that you refrain from using third-party spare parts or a combination of WEH® Products with unsuitable third-party products. You alone are responsible for reviewing the suitability of third-party products. WEH® Products and WEH® Spare parts comply with our quality and safety standards.

Explanation on the Pressure Equipment Directive

These WEH® Products are generally and exclusively classified as pressure accessories for piping in accordance with Article 2 (5) of the Pressure Equipment Directive 2014/68/EU. These WEH® Products may not be used (i) as safety accessories or (ii) for vessels as defined by the Pressure Equipment Directive 2014/68/EU. Therefore, the application of these WEH® Products must comply with their classification as pressure accessories for piping. The assessment with regard to a different classification can, however, be made on request.

External change management

WEH reserves the right to update, optimise and adjust its products continuously. This may result in corresponding changes of the product. Customers will be informed proactively or unsolicited by WEH only in individual cases about product updates, product optimisations and/or product adaptations that have been carried out. You are free to contact WEH at any time to request information about any product updates, product optimisations and/or product adjustments.

© All rights reserved, WEH GmbH. Any unauthorized use is strictly forbidden. Subject to alteration.
No liability will be assumed for any content. Herewith previous versions are no longer valid.

» Contacting

For queries and further information, please do not hesitate to contact us.

Manufacturer:

WEH GmbH Precision Connectors

Josef-Henle-Str. 1
89257 Illertissen / Germany

Phone: +49 7303 9609-0
Fax: +49 7303 9609-9999

Email: sales@weh.com
www.weh.com